

The National  
**EDUCATION**  
Show

JUNE  
**16<sup>th</sup>**  
2023

**Llandudno**  
Venue Cymru

Incorporating the **ALN / SEND Show**

## Show Guide

**50%  
OFF**

for group bookings of  
10+ delegates  
until 6th April 2023

@NationalEdShow  
#NESLLANDUDNO2023

Working with:



# Are you looking to **Inspire, Support** and **Develop Great Learners?**

Simple steps to make your **National Education Show** experience **enjoyable, informative** and **beneficial**.



## **STEP 1:**

Share the brochure with all relevant staff.



## **STEP 2:**

Advise staff on the options for seminars – linking this to the SDP.



## **STEP 3:**

Scan QR code for online booking or photocopy form on page 17.



## **STEP 4:**

Collect and send all the seminar forms to the NES email or office.



## **STEP 5:**

Print off the general entry pass and bring to the show.



## **STEP 6:**

The day has arrived!  
Enjoy your time at NES Llandudno on 16th June 2023



## **STEP 7:**

Hold a staff meeting to share the key points and develop implementation of new knowledge and ideas.



All teachers, leaders and support staff in the Rainbow Federation had an informative and interesting day. By attending the National Education Show we ensured all members of staff had access to professional development which was relevant to them and the opportunity to network with other colleagues during the day.

**Rhian Lundrigan**

*Executive Headteacher,*

*The Rainbow Federation - Bryn Hafod and Glan yr Afon Primary Schools*



**Don't forget to add the date to your calendar!**

**Can't make the Llandudno show?**

Don't worry you can book your **FREE** entry pass at the **Cardiff National Education Show on 6th October 2023.**

To book your pass go to [www.nationaleducationshow.com](http://www.nationaleducationshow.com)



Attending the National Education Show allowed our staff the opportunity to tailor their CPD according to their own personal needs. The variety of seminars they could choose gave them inspiration, enjoyment, innovative ideas for teaching and a real boost to their wellbeing. It was also a unique opportunity to expose all our staff to the latest techniques and resources presented by many exhibitors to inspire their enthusiasm for developing new practice. They took back to school many ideas and inspiration that enabled them to develop their pedagogy and begin implementing innovative ideas for a new curriculum.

**T Griffith**

*Assistant Head, Cyfarthfa High School*



**Check out what happened at last Show in Cardiff**



# About NES Llandudno 2023

## Welcome



We would like to welcome you to the National Education Show Llandudno.

This will be our first year in Llandudno, hosting Wales' biggest education show. The show is all about celebrating education and teaching by bringing together thousands of educational professionals to network, experience the exciting exhibition and seminars.

The show will be full of innovative ideas and solutions, as well as engaging accredited CPD seminars which will be bursting with the latest research, practical strategies and ideas to inspire and empower staff, children and young people. Additionally, we also have a selection of seminars available in Welsh.

We can't wait to see you on Friday 16th June 2023 at the spectacular Venue Cymru.



**Nicola S Morgan**  
Founder & Director



**Einir A Williams**  
Director



## Show Date & Times

**Friday 16th June 2023 | 08.00 - 16.00**

### **VENUE:**

Venue Cymru, Promenade, Llandudno, LL30 1BB

### **FOOD:**

Food and drink will be available to purchase from the Venue Cymru Café located in the Main Arena.

### **WI-FI:**

Venue Cymru offer a free of charge public Wi-Fi facility for delegates and patrons using the complex. This can be accessed by selecting - Venue Cymru Free Wireless.

### **TRAVEL & PARKING:**

The venue is just a five-minute walk from Llandudno Train Station. Venue Cymru is 4 miles away from the A55 and takes approximately 8 minutes by car, giving access from all over the North West and beyond via M62/M56. From Junction 19 of the A55, follow signs for Llandudno and take the A470 (Royal Welsh Way), from there follow the brown road signs marked Venue Cymru. Venue Cymru operates a Pay and Display car park at the rear of the building, with designated disabled parking bays to the left of the main entrance. Parking is also available on the Promenade which is also Pay and Display until 4pm, to which then it is free of charge.

### **SEATING:**

There are seating areas in the café and Antrim areas.

### **PRAYER ROOM:**

A prayer room is also available to use on the day - if required please ask a member of staff to direct you there.

### **PHOTOGRAPHY:**

PLEASE NOTE THAT THIS EVENT IS BEING FILMED AND PHOTOGRAPHED.

Please read our Admissions Policy here:

<http://nationaleducationshow.com/admissions-policy/>

Working with:



Agored Cymru is a Welsh awarding body, leading education in Wales, for Wales. We engage with schools so they can have the very best qualifications and services, meeting the needs of the new Curriculum for Wales and beyond.

[www.agored.cymru](http://www.agored.cymru)



We provide a large range of courses, expert guidance, publication, conferences as well as innovative resources to motivate staff and empower schools.

[www.nsmtc.co.uk](http://www.nsmtc.co.uk)



PRIFYSGOL  
**BANGOR**  
UNIVERSITY

The School of Educational Sciences has an established reputation in the fields of teacher training, professional development and leadership.

[www.bangor.ac.uk](http://www.bangor.ac.uk)



Since 1947 Community Playthings, has designed and manufactured solid wood furniture and play equipment, drawing on expertise from childcare professionals across the UK and internationally. Our products inspire play, support all aspects of child development and come with a 15-year warranty.

[www.communityplaythings.co.uk](http://www.communityplaythings.co.uk)



NAHT is the largest union and professional association for senior and middle leaders in education. We are solution driven and add value to support and protect your role. Join today.

[www.hope-education.co.uk](http://www.hope-education.co.uk)



Nasen, The National Association for Special Education Needs, is a charity organisation that supports thousands of practitioners by providing sector leading information, training and resources to enable staff to meet the needs of all pupils.

[www.nasen.org.uk](http://www.nasen.org.uk)



The Books Council of Wales is a national charity that supports the publishing industry in Wales. An important element of our work is promoting literacy and reading for pleasure. We do this by ensuring a regular supply of publications and co-ordinating schemes and special events that celebrate reading in a fun and attainable for all.

[www.books.wales](http://www.books.wales)

## Contents

About NES	4
Seminar Timetable	7
Seminars & Speakers	8-15
Booking Form	17



**Spread the word!**

Don't forget to include the following, when talking about us on social media!

**#NESLLANDUDNO2023**  
**@NationalEdShow**

**National Education Show,**  
27 Morfa Gaseg  
Llanfrothen, LL48 6BH

**01766 772 927**  
**info@nationaleducationshow.com**  
**www.nationaleducationshow.com**

**@NationalEdShow**

**/NationalEducationShow**

**@NationalEdShow**

Book your tickets now. **01766 772927**





Mae Marc Ansawdd Agored Cymru, sef mesurydd rhagoriaeth ar gyfer digwyddiadau a rhaglenni dysgu, wedi cael ei ddyfarnu i'r Sioe Addysg Genedlaethol eleni.

Mae hwn yn cydnabod ac yn dathlu arferion rhagorol ym maes darparu dysgu yng Nghymru. Drwy fynd i'r sioe, byddwch yn ennill **5 awr DPP** am eich cyfranogiad.

Mae Marc Ansawdd Agored Cymru yn gwerthuso digwyddiadau a rhaglenni dysgu yn erbyn safonau proffesiynol ac mae'n seiliedig ar arferion da ac ymchwil cyfredol ym maes addysg a hyfforddiant.

I gael rhagor o wybodaeth, cysylltwch â [marc.ansawdd@agored.cymru](mailto:marc.ansawdd@agored.cymru)

This year's National Education Show has been awarded the Agored Cymru Quality Mark, a measure of excellence for learning programmes and events.

This recognises and celebrates outstanding practice for delivering learning in Wales. By attending the show you will gain **5 CPD hours** for you participation.

The Agored Cymru Quality Mark evaluates learning programmes and events against professional standards and is underpinned by good practice and current research in education and training.

To find out more, contact [quality.mark@agored.cymru](mailto:quality.mark@agored.cymru)

# Seminar Timetable

All seminars accredited by



9:00 - 9:50

10:30 - 11:20

12:00 - 12:50

13:30 - 14:20

15:00 - 15:50

Room TBC	Differentiation (Adaptive Practice) is NOT a dirty word!  <b>Nina Jackson</b>	Formative Assessment - principles into practice  <b>Shirley Clarke</b>	Mental Toughness: Developing Student Resilience  <b>Nicola S. Morgan</b>	'I'M NOT NAUGHTY!' Supporting children with Oppositional Demand Disorder (ODD) and Pathological Demand Avoidance (PDA)  <b>Karen Ferguson</b>	Confidence on Demand  <b>Action Jackson</b>
Room TBC	Supporting children with Additional Learning Needs  <b>Lorraine Petersen</b>	Promoting Energy and Positivity for Staff Working with Children  <b>Jenny Mosley</b>	Recognising ALN/SEND in the Early Years  <b>Sam Garner</b>	The Art of Being Brilliant: Your Wellbeing Launchpad  <b>Andy Cope</b>	Would you like a tool for Building Family Resilience?  <b>Kris &amp; Grace</b>
Room TBC	It's Ordinary Magic - Resilience  <b>Kris &amp; Grace</b>	How well has your school implemented the ALN Code for Wales?  <b>Lorraine Petersen</b>	Hidden autistic sensory differences in your classroom  <b>Joanna Grace</b>	HOPE - Being at your best, more of the time  <b>Sid Madge</b>	Engagement Through Breathing Techniques & Movement  <b>Emma Jones</b>
Room TBC	Bring Me The Head of Willie Wonka  <b>Hywel Roberts</b>	Shift Happens: Be the change  <b>Andy Cope</b>	BOTHEREDNESS and C4W: a reverie in stories, stance and pedagogy  <b>Hywel Roberts</b>	The Magic of Metacognition for Learning and Wellbeing  <b>Jackie Beere</b>	Building Body Confidence, Self-Esteem & Resilience  <b>Martin Staniforth</b>
Room TBC	Myth busting sensory strategies big and small  <b>Joanna Grace</b>	The Power of Peer Coaching for staff and students  <b>Jackie Beere</b>	The New Curriculum  <b>Prof. Mick Waters</b>	Overcoming barriers to primary maths  <b>Ben Harding</b>	The Magic in Education  <b>Sid Madge</b>
Room TBC	Happiness in Education  <b>Action Jackson</b>	A goal should scare you a little and excite you a lot!  <b>Bethan Harding</b>	What's in a label? Neurodiversity  <b>Karen Ferguson</b>	'Let me tell you a story'  <b>Mary Myatt</b>	How Active Learning will transform your school!  <b>Jon Smedley</b>
Room TBC	Working with Disruptive, Defiant & Disrespectful Pupils  <b>Nicola S. Morgan</b>	I've taught it, but have my pupils learnt it?  <b>Mary Myatt</b>	Family Matters  <b>Kelly Hannaghan</b>	Music Therapy and Communication  <b>Joy Dando</b>	Raising Boys Achievement  <b>Gary Wilson</b>
Room TBC	A practical science seminar to Inspire future scientists!  <b>Awen Ashworth</b>	Voices of Wellbeing: The Six Circles of Mental & Emotional Wellbeing  <b>Nina Jackson &amp; Kelly Hannaghan</b>		Mental Health isn't rocket science!  <b>Sam Garner</b>	The Importance of Play and Fun for Children's Wellbeing  <b>Jenny Mosley</b>
Welsh	Cynllunio'n strategol er mwyn paratoi ar gyfer cyflwyno Cwricwlwm i Gymru gan ystyried anghenion yr ardal leol a gan sicrhau profiadau arloesol i bobl ifanc Dyffryn Conwy  <b>Owain Gethin Davies</b>	Seminar Gwyddoniaeth ymarferol i Sbarduno gwyddonwyr y dyfodol!  <b>Awen Ashworth</b>	Stori Mistar Mostyn a hanesion eraill  <b>Myrddin ap Dafydd</b>	Sesiwn flasu ymarferol a hwyliog yng nghwmni'r actores, awdures a'r athrawes loga a meddylgarwch Leisa Mererid  <b>Leisa Mererid</b>	Mapio llafaredd o fewn Maes Dysgu leithoedd, Llafaredd a Chyfathrebu gan rannu syniadau ac adnoddau i atgyfnerthu patrymau iaith cywir  <b>Rhys Glyn</b>
Outside Venue		Outdoor Learning for the New Curriculum: Grab and Go  <b>Polly Snape &amp; Carolyn Burkey</b>		Outdoor Learning for the New Curriculum: Grab and Go  <b>Polly Snape &amp; Carolyn Burkey</b>	

All seminars accredited by



# Seminars & Speakers

9.00-9.50

## Differentiation (Adaptive Practice) is NOT a dirty word!

In a world of ever changing educational policies and practices, it is the unique world of the child, growing, learning and experiencing the world with different learning experiences which counts. During this session Nina Jackson will share with you differentiated strategies, activities and opportunities for all pupils to develop their love of learning, whilst being given an opportunity to shine and be their unique individual selves. No child will be left without a learning opportunity that will allow them to access the curriculum. Bring to the session your preferred digital learning device to experience some simple approaches to differentiation as well as working with your inner passion, knowledge, skills and expertise as a practitioner. From language to creativity, relationships to connectivity, differentiation will become your favourite ingredient for all lessons.



Presented by:

**Nina Jackson**  
Education Consultant & Author

Language: **English** | Audience: **All**

9.00-9.50

## Myth busting sensory strategies big and small

Do you have sensory toys in your classroom? Do you do sensory circuits? Have you got a sensory room? Do these things work? Why are they so popular?

This session will bust some common myths around sensory strategies and give you research based insight to support effective reflective sensory practice.

SEND Seminar



Presented by:

**Joanna Grace**  
Sensory Engagement and Inclusion Specialist

Language: **English** | Audience: **All inc. ALN/SEND**

9.00-9.50

## Bring Me The Head of Willie Wonka

In this session, Hywel will support colleagues in tapping back into their professional imaginations in support of the child and through the lens of Curriculum for Wales.

The session will have a practical slant but it's nothing to worry about! Suitable for class teachers in primary and special settings.



Presented by:

**Hywel Roberts**  
Education Consultant & Author

Language: **English** | Audience: **Pri**

9.00-9.50

## Happiness in Education

This seminar is designed to teach educators the importance of mental health and well-being as well as understand how to maintain their mental health in a positive and practical way. Time will also be given to look at ways to help young people feel more confident and resilient. This session will be fun and interactive.



Presented by:

**Jackson Ogunyemi**  
Motivational Speaker & Author

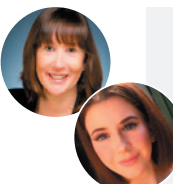
Language: **English** | Audience: **All**

9.00-9.50

## It's Ordinary Magic - Resilience

This seminar will provide you with some practical tips and tools to enable you to view your school or organisation through a resilience lens.

We will learn what the evidence tells us about building resilience and review the free Resilience Framework and The Resilient Classroom resources.



Presented by:

**Kris Wodehouse**  
Practice Development Lead Education Consultant  
**Grace Robson**  
Youth Engagement Sessional Worker

Language: **English** | Audience: **All**

9.00-9.50

## Supporting children with Additional Learning Needs

During this session Lorraine will consider the complexity of needs of pupils in our schools today. She will discuss how we can identify the underlying needs and define some of the strategies, interventions and support that we can put in place to meet these needs.

SEND Seminar



Presented by:

**Lorraine Petersen OBE**  
Educational Consultant

Language: **English** | Audience: **All inc. ALN/SEND**



All seminars accredited by



# Seminars & Speakers

9.00-9.50

## A practical science seminar to Inspire future scientists!

The session, led by Awen Ashworth, will give you the opportunity to learn about Science in the Early Years. As a practical session, you will have a go at the simple Science experiments that you can deliver in the classroom. The session will give you an insight to the different methods of introducing Science by using simple equipment. With the new Curriculum in Wales now being delivered, both Science and Technology is one of the 6 areas of learning and experience.



Presented by:

**Awen Haf Ashworth**  
**Inspire**

Language: **English** | Audience: **All**

9.00-9.50

## Working with Disruptive, Defiant & Disrespectful Pupils

It is no secret that today's classrooms can be a challenging environment for learning. Many pupils are coming to school/college exhibiting challenging behaviours, not only do these challenging behaviours affect educators' ability to teach a lesson and maintain control, but they also disrupt the productivity of the class as a whole. This seminar is designed to challenge the typical perceptions around behaviour as well as including a variety of tools, strategies and techniques help effectively manage challenging behaviour as well as promote positive behaviour.



Presented by:

**Nicola S. Morgan**  
**Education Consultant & Author**

Language: **English** | Audience: **All**

9.00-9.50

## Cynllunio'n strategol er mwyn paratoi ar gyfer cyflwyno Cwricwlwm i Gymru gan ystyried anghenion yr ardal leol a gan sicrhau profiadau arloesol i bobl ifanc Dyffryn Conwy

Taith Ysgol uwchradd yng Ngogledd Cymru wrth iddynt lunio'n strategol er mwyn cynllunio cwricwlwm unigryw i bobl ifanc yr ardal. Bydd y cyflwyniad yn gyfle i gael blas ar sut mae'r ysgol wedi cynnwys y pedwar diben, y medrau a'r datganiadau o'r hyn sy'n bwysig wrth gynllunio a gwireddu'r cwricwlwm lleol sydd yn diwallu anghenion pobl ifanc yr ardal.



Presented by:

**Owain Gethin Davies**  
**Pennaeth Ysgol Dyffryn Conwy**

Language: **Cymraeg** | Audience: **All**

10.30 - 11.20

## Formative Assessment - principles into practice

Shirley Clarke, a world expert in formative assessment, takes you through the interdependent pieces of the formative assessment jigsaw, linking evidence with current practice drawn from her many learning teams.



Presented by:

**Shirley Clark**  
**Formative Assessment Expert**

Language: **English** | Audience: **All**

10.30 - 11.20

## Voices of Wellbeing: The Six Circles of Mental & Emotional Wellbeing

Voices of Wellbeing, Nina will share with you an amazing wellbeing programme that can support the mental and emotional health of everyone in your school community. From Purpose, Relationships, Emotional Learning, Self-Care, Gratitude and Celebration you will find ways to embed these in your school curriculum and pastoral systems. When mental and emotional health is such a concern, this session will give you ideas, strategies and the skills to use purposeful interventions so that everyone can flourish.



Presented by:

**Nina Jackson**  
**Education Consultant & Author**  
**Kelly Hannaghan**  
**Education Consultant**

Language: **English** | Audience: **All inc. ALN/SEND**

10.30 - 11.20

## Promoting Energy and Positivity for Staff Working with Children

Jenny's passionate belief is that we each need to bring more balance into our lives and to work on our own Personal Care Plan to recharge our energy and joy levels. We need sufficient energy to actively support others, even more-so during times of recovery. Mindfulness and fun are uplifting touchstones of her philosophy. It's also important we reach out and share our experiences in supportive, non-judgemental adult circle-times. Jenny will be talking about the importance of leading by example and building our energy and empathy levels so we can create strong, caring, inclusive relationships and learning environments for everyone.



Presented by:

**Jenny Mosley**  
**Education Consultant & Author**

Language: **English** | Audience: **All inc. ALN/SEND**

Book your tickets now. **Call 01766 772927**

All seminars accredited by



# Seminars & Speakers

10.30 - 11.20

## Shift Happens: Be the change

When effective family engagement is embedded into a school culture, it has a positive impact on children and young people's outcomes. The question is are we doing enough to engage all families within our school communities. This session aims to explore why family engagement is so important and what the current challenges are. Take-away strategies to develop a parent friendly approach to building positive home school links, through purposeful family empowerment groups, within your school community, as well as gain ideas to take parent voice through surveys.



Presented by:

**Dr Andy Cope**  
Teacher, Author & Dr of Happiness

Language: **English** | Audience: **All**

10.30 - 11.20 (+13.30 - 14.20)

## Outdoor Learning for the New Curriculum: Grab and Go

A workshop packed full of practical ideas to teach different aspects of the new curriculum across the whole of the primary age group. We'll demonstrate plenty of engaging activities, using simple everyday resources, and show how they can be adapted time and time again to require minimal planning but maximum fun! Ideal for those who already have experience of Outdoor Learning and are looking for fresh ideas, or for anyone who is just starting out on their journey towards teaching outdoors more often.



Presented by:

**Polly Snape & Carolyn Burkey**  
Creative Education Consultant & writer

Language: **English** | Audience: **All**

10.30 - 11.20

## A goal should scare you a little and excite you a lot!

Do you have the balance right? This session will look at the importance of remaining 'excited' and joyful in the job (not in a cheesy way!). Together we will challenge our thinking and our hearts. We will discuss how to get the balance right and how we can teach and lead with authentic joy and excitement. Do we know what that looks like in our minds, do we feel it in our hearts? Let's bring the excitement of having the best job in the world back to our school communities!



Presented by:

**Bethan Harding MBE**  
Education Consultant & Director at Harding Education

Language: **English** | Audience: **All inc. ALN/SEND**

10.30 - 11.20

## How well has your school implemented the ALN Code for Wales?

SEND Seminar

The new Additional Learning Needs (ALN) system came into force in September 2021 and began to be implemented from January 2022. The challenge of moving almost 100,000 pupils to the new statutory arrangements, still in the fall out of a pandemic is no mean feat.

This session will reflect on how well the changes are taking place.



Presented by:

**Lorraine Petersen OBE**  
Educational Consultant

Language: **English** | Audience: **ALN/SEND**

10.30 - 11.20

## I've taught it, but have my pupils learnt it?

This seminar will cover some headlines from research to help pupils know more, remember more and do more over time.

What the evidence tells us about supporting pupils to tackle interesting, demanding work. For example, the importance of concepts, curiosity and low stakes quizzes.



Presented by:

**Mary Myatt**  
Education Advisor

Language: **English** | Audience: **All**

10.30 - 11.20

## The Power of Peer Coaching for staff and students

Find out how peer coaching can develop self-regulation, resilience and improve progress for both teachers and students.

The best coaching holds up a mirror to our thinking so that we can develop metacognitive strategies and learn to think about our own thinking and then go on to develop the cognitive flexibility to cope with change and challenge. You will also get to try out a 7-minute coaching strategy to use with colleagues, students or on yourself.



Presented by:

**Jackie Beere**  
Education Advisor

Language: **English** | Audience: **All**

All seminars accredited by



# Seminars & Speakers

10.30 - 11.20

## Seminar Gwyddoniaeth ymarferol i Sbarduno gwyddonwyr y dyfodol!

O dan arweiniad Awen Ashworth fe gewch gyfle i ddysgu am Wyddoniaeth yn y blynyddoedd cynnar. Bydd hwn yn sesiwn ymarferol ble byddwch yn cael cyfle i roi cynnig ar wneud arbrofion Gwyddoniaeth syml y gellir eu gwneud eto yn eich lleoliad. Bydd y gweithdy yn rhoi mewnlwg i ddulliau newydd o gyflwyno Gwyddoniaeth gan ddefnyddio offer syml. Gyda'r Cwricwlwm newydd yn yr arfaeth, mae Gwyddoniaeth a Thechnoleg yn un o'r chwe maes dysgu ac arbenigedd.



Presented by:

**Awen Haf Ashworth**  
Sbarduno

Language: **Cymraeg** | Audience: **All**

12.00 - 12.50

## Hidden autistic sensory differences in your classroom

Some sensory differences are very apparent, but hidden differences have a big impact too. This seminar will reveal some common sensory differences experienced by autistic people and explore their relevance to your classroom, showing how simple tweaks could make the environment more accessible and engaging for everyone.



Presented by:

**Joanna Grace**  
Sensory Engagement and Inclusion Specialist

Language: **English** | Audience: **All inc. ALN/SEND**

SEND Seminar

12.00 - 12.50

## What's in a label? Neurodiversity

In this seminar 'What's in a label? Neurodiversity' Karen will cover what the term neurodiversity means and the challenges and strengths children and young people will show in school and college. You will leave with reassuringly uncomplicated strategies and techniques.



Presented by:

**Karen Ferguson**  
Trainer NSM Training & Consultancy

Language: **English** | Audience: **All inc. ALN/SEND**

SEND Seminar

12.00 - 12.50

## BOTHEREDNESS and C4W: a reverie in stories, stance and pedagogy

In this session, Hywel will bring his book *Botheredness: stories, stance and pedagogy to life!* It's a practical session of stories, laughter, ideas and research.

The session will have a practical slant but it's nothing to worry about! Suitable for class teachers in primary, special and secondary settings.



Presented by:

**Hywel Roberts**  
Education Consultant & Author

Language: **English** | Audience: **All inc. ALN/SEND**

12.00 - 12.50

## Mental Toughness: Developing Student Resilience

Developing student's resilience is now being seen as just as important as academic learning and wellbeing. According to research that resilient students achieve higher attendance, more positive behaviour, and achieve greater academic outcomes.

This session is designed for participants to gain a deeper understanding as well as explore a kit bag of research-based practical approaches and strategies to support building resilience in students.



Presented by:

**Nicola S. Morgan**  
Education Consultant & Author

Language: **English** | Audience: **All**

12.00 - 12.50

## Recognising ALN/SEND in the Early Years

It's commonly evidenced that early intervention improves outcomes for ALN/SEN children and this session will help education professionals recognise the indicators at an early age. It will also look at the routes and minimum ages for any diagnosis and how support can be provided in early years settings.



Presented by:

**Sam Garner**  
Educational Consultant

Language: **English** | Audience: **All inc. ALN/SEND**

SEND Seminar

Book your tickets now. **Call 01766 772927**

All seminars accredited by



# Seminars & Speakers

12.00 - 12.50

## The New Curriculum

TBC



Presented by:

**Professor Mick Waters**  
Education & Leadership Adviser

Language: **English** | Audience: **All**

12.00 - 12.50

## Stori Mistar Mostyn a hanesion eraill

Cyflwyniad i nofel hanesyddol newydd sydd wedi'i lleoli yn Llandudno sy'n cynnig llwybrau diddorol ar lawr y dosbarth. Mae llawer o atwadau wedi bod dros y blynyddoedd diwethaf am gyflwyno Hanes Cymru yn llawnach ac yn fwy diddorol i holl blant Cymru. Dyna union fwrriad Dr Elin Jones wrth iddi fynd ati i gyflawni uchelgais oes a chreu dwy gyfrol: Hanes yn y Tir a History Grounded. O'r diwedd, mae'r plant yn y ddwy iaith yn cael y profiad o weld stori 5,000 o flynyddoedd yn dod yn fyw ac yn glir iddyn nhw o ganrif i ganrif. Canolbwyntio ar leoliadau mae'r awdur wrth fynd â ni ar daith drwy amser a thrywy bob rhan o Gymru.



Presented by:

**Myrddin ap Dafydd**  
Carreg Gwalch

Language: **Cymraeg** | Audience: **All**

12.00 - 12.50

## Family Matters

When effective family engagement is embedded into a school culture, it has a positive impact on children and young people's outcomes. The question is are we doing enough to engage all families within our school communities. This session aims to explore why family engagement is so important and what the current challenges are. Take-away strategies to develop a parent friendly approach to building positive home school links, through purposeful family empowerment groups, within your school community.



Presented by:

**Kelly Hannaghan**  
Education Consultant

Language: **English** | Audience: **All**

13.30 - 14.20

## The Art of Being Brilliant: Your Wellbeing Launchpad

Based on the science of positive psychology, this session is evidence-based but with the big words surgically removed and replaced with common sense, doable principles and great fun. The challenge is quite straight-forward; it's about raising your 'new normal' to world class.



Presented by:

**Dr Andy Cope**  
Teacher, Author & Dr of Happiness

Language: **English** | Audience: **All**

13.30 - 14.20

## HOPE - Being at your best, more of the time

How do you find, Live and Give the Magic through your fantastic work?

Being in top form all of the time just isn't possible, and we shouldn't allow that unattainable goal of perfection to leave us feeling inadequate and deflated. But there ARE ways we can deliver our best game more often, and in this inspiring session, Sid Madge will help us develop the confidence and skills to do that.



Presented by:

**Sid Madge**  
Transformation & change specialist, founder of Meee & TEDx speaker

Language: **English** | Audience: **All**

13.30 - 14.20

## 'I'M NOT NAUGHTY!' Supporting children with Oppositional Demand Disorder (ODD) and Pathological Demand Avoidance (PDA)

SEND Seminar

This seminar is designed to give participants an insight, understanding and provide a kit bag of strategies. Participants will be given a range of options for inclusive educational approaches and uncomplicated strategies to meet the needs of children and young persons with PDA/ODD to support them effectively.



Presented by:

**Karen Ferguson**  
Trainer NSM Training & Consultancy

Language: **English** | Audience: **All inc. ALN/SEND**

All seminars accredited by



# Seminars & Speakers

13.30 - 14.20

## Music Therapy and Communication

SEND Seminar

You don't need to talk. Music can speak to everyone. Music Therapy can help everyone to speak, even without words.

We will examine different ways of working with pupils who are non-verbal including those who have autism, are elective mutes, are profoundly deaf or any other significant communication difficulty.

Using a variety of games, art, ICT stories and improvisation we will explore how we can develop communication, physically, visually and through sound making.



Presented by:

**Joy Dando** *BEEd Hons, NPQH, MA Music Therapy*  
**Music Therapist**

Language: **English** | Audience: **All inc. ALN/SEND**

13.30 - 14.20

## The Magic of Metacognition for Learning and Wellbeing

How and why 'thinking about thinking' impacts on learning and mental fitness. We need to help students develop the habits of metacognition every day in our classrooms. This session offers advice about how to manage your mind and develop emotional resilience, plus practical strategies and an introduction to Buddhism in a Box - my simple guide to building mental muscle for future success and wellbeing.



Presented by:

**Jackie Beere**  
**Education Consultant**

Language: **English** | Audience: **All**

13.30 - 14.20

## 'Let me tell you a story'

Our brains 'privilege' story. We'll take a look at why this is so and share ideas for using stories in our curriculum plans. As Stephen Pinker, world renowned psychologist, says 'Cognitive psychology has shown that the mind best understands facts when they are woven into a conceptual fabric, such as a narrative, mental map, or intuitive theory. Disconnected facts in the mind are like unlinked pages on the Web: They might as well not exist.



Presented by:

**Mary Myatt**  
**Education Advisor**

Language: **English** | Audience: **All**

13.30 - 14.20

## Overcoming barriers to primary maths

We all know literacy and numeracy skills improve the life chances of our young people. However, a significant proportion of children are not at the expected standard in maths on reaching secondary school. This should not sit well with us and it does not need to be this way. Ben Harding is an experienced Headteacher, inspector and maths specialist. In this session he will identify some reasons for this concerning issue and look to share research and practical solutions about how it can be addressed in your school.



Presented by:

**Ben Harding**  
**Education Consultant & Director at Winning With Numbers Primary**

Language: **English** | Audience: **All**

13.30 - 14.20

## Mental Health isn't rocket science!

There are many theories around happiness and positive mental health but they all boil down to the same few principles - some say there are 3 factors!! Join this session to find out what those three factors are and how understanding them can help us effectively, and simply, support the mental health of our students and ourselves!



Presented by:

**Sam Garner**  
**Education Consultant**

Language: **English** | Audience: **All**

13.30 - 14.20

## Sesiwn flasu ymarferol a hwyliog yng nghwmni'r actores, awdures a'r athrawes loga a meddylgarwch Leisa Mererid

Sut allwn ni gyflwyno siapiau loga, dulliau anadlu ac ymarferion meddylgarwch syml ar lawr y dosbarth er mwyn meithrin a chefnogi iechyd a lles ein disgyblion.



Presented by:

**Leisa Mererid**  
**Actores, awdures a'r athrawes loga a meddylgarwch**

Language: **Cymraeg** | Audience: **All**



All seminars accredited by



# Seminars & Speakers

15.00 - 15.50

## The Importance of Play and Fun for Children's Wellbeing

Having positive, enjoyable playtimes makes the world of difference to children. We cannot underestimate the importance of wellbeing arising from play and laughter. Jenny will discuss how co-operation, inclusion, community and belonging can be nurtured through play and playground activities. Children can learn and play traditional and new games to support better learning, friendships and teamwork. Jenny will discuss how everyone can have their own interests in a busy, zoned playground.



Presented by:

**Jenny Mosley**  
Education Consultant & Author

Language: **English** | Audience: **EY, Pri & ALN/SEND**

15.00 - 15.50

## Building Body Confidence, Self-Esteem & Resilience

Negative body image correlates with low in-class participation. So, the Dove Self-Esteem Project has developed resources that help to improve body image and make students feel more confident to participate in life. This session will give an introduction to the project new 'Amazing Me' resource (for Primary) and 'Confident Me' resource (for Secondary). All delegates will leave with a free USB stick with resources.



Presented by:

**Martin Staniforth**  
Education Consultant & co-founder of  
Laughing Phoenix

Language: **English** | Audience: **All**

15.00 - 15.50

## The Magic in Education

There is magic in you and in us all. Let Sid Madge help you discover that magic and make it work for you. The key to that magic is LEARNING. Learning is essential to society, the economy and, vitally, to ourselves. Everything about our future - community, culture and enterprises - relies totally on that learning. But society struggles to keep up with dynamic social and environmental change and the way people now work and relate to others through technology. Sid's unique and proven approach equips us to discover the necessary mindset, skills and self-belief to change society for the better.



Presented by:

**Sid Madge**  
Transformation & change specialist, founder of  
Meee & TEDx speaker

Language: **English** | Audience: **All**

15.00 - 15.50

## How Active Learning will transform your school!

Post Covid, research undergone nationally shows that headteachers are concerned about: gaps in learning, mental and emotional well-being, and lack of physical activity within their children. With so much pressure on the school day, Jon will discuss how adding movement integration into curriculum subjects will not only increase levels of activity, but also raise attainment, and develop the whole child.



Presented by:

**Jon Smedley**  
Managing Director: Teach Active

Language: **English** | Audience: **All inc. ALN/SEND**

15.00 - 15.50

## Confidence on Demand

From this session, you will be able to understand the barriers to self-worth, how to deal with the INNER CRITIC and not pay attention to others' opinions and stop doubting yourself. The session also allows us to learn the 'I am not good enough' voice and its negative impact on us and how to get rid of it. You will be taught how we can make a real genuine impact and rid ourselves of nervousness when delivering and contributing. Tackling real issues such as how to stop imposter syndrome, and most importantly how to STOP second-guessing yourself! In this fun and interactive session, you can understand how confidence is key and by the end, you will walk away with the practical tools to develop and maintain confidence in any situation.



Presented by:

**Jackson Ogunyemi**  
Motivational Speaker & Author

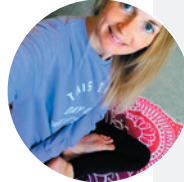
Language: **English** | Audience: **All**

15.00 - 15.50

## Engagement Through Breathing Techniques & Movement

The seminar will be very practical and all will be asked to take part. Emma aims to deliver the session as she would with children. She will model how to run a simple wellbeing session for children between 3-11 years old.

This will include the importance of exploring feelings and emotions, yoga and movement, breathing techniques and mindfulness. These movements and techniques are designed to keep children learning and engaged during class and school.



Presented by:

**Emma Jones**  
Children's Yoga & Mindfulness Teacher

Language: **English** | Audience: **EY, Pri**

All seminars accredited by



# Seminars & Speakers

15.00 - 15.50

## Raising Boys Achievement

This seminar talks about tracing under-achievement in boys from pre-school to 16, and looks at we can do to prevent it. Gary will explain how to interact with boys to optimise learning and overcoming barriers to achievement.



Presented by:

**Gary Wilson**  
Education Consultant

Language: **English** | Audience: **All**

15.00 - 15.50

## Cyflwyno egwyddorion trochi cynnar a hwyr effeithiol.

Mapio llafaredd o fewn Maes Dysgu leithoedd, Llafaredd a Chyfathrebu gan rannu syniadau ac adnoddau i atgyfnerthu patrymau iaith cywir



Presented by:

**Rhys Glyn**  
Cyn-bennaeth

Language: **Cymraeg** | Audience: **All**

## Seminars Tickets

If you would like to attend any of our seminars at The National Education Show 2023, make sure you book today!

Early Bird Price:

**£10**  
+VAT

Available until midnight  
6th April 2023

Pre-show Price:

**£15**  
+VAT

Available until midnight  
15th June 2023

On the Day Price:

**£20**  
+VAT

Available on the day  
16th June 2023

To buy your ticket, visit:

[www.NationalEducationShow.com](http://www.NationalEducationShow.com)

Limited seminar tickets can be booked on the day.

**No card machine is available to buy tickets on the day.**

**50% OFF**

for group bookings of  
10+ delegates  
until 6th April 2023

@NationalEdShow  
#NESLLANDUDNO2023



Returning to Cardiff  
in 2023!

**6th October 2023**

City Hall, Cardiff

Add the dates to  
your diaries!

Interested in speaking?

Contact us for a speaker application form now!  
Email: [nicola@nationaleducationshow.com](mailto:nicola@nationaleducationshow.com)

Cardiff:  
**6th Oct 2023**  
Caerdydd:  
**Hyd 6<sup>ed</sup> 2023**

Yn dod i Gaerdydd  
hefyd yn 2023!

Rhowch y dyddiadau  
yn eich dyddiadur



**Hydref 6ed 2023**

Neuadd y Ddinas, Caerdydd

Awyddus i gynnal seminar?

Cysylltwch am ffurflen gais nawr!

Ebost: [einir@sioeaddysggenedlaethol.com](mailto:einir@sioeaddysggenedlaethol.com)

**PLEASE PHOTOCOPY A FORM FOR EACH MEMBER OF STAFF**

Delegate Name: \_\_\_\_\_ School / Organisation \_\_\_\_\_

Delegates email address \_\_\_\_\_ Job Title \_\_\_\_\_

**(Please ensure your email address is individual so CPD hours can be awarded by Agored Cymru).**

Please mark the table below with the seminars that you wish to attend.

 SEND / ALN Seminars

 09:00 - 09:50

 10:30 - 11:20

 12:00 - 12:50

 13:30 - 14:20

 15:00 - 15:50

Room TBC	'Differentiation (Adaptive Practice) is NOT a dirty word!' Nina Jackson	Formative Assessment – principles into practice Shirley Clarke	Mental Toughness: Developing Student Resilience Nicola S. Morgan	<b>'I'M NOT NAUGHTY!'</b> Supporting children with ODD and PDA Karen Ferguson	Confidence on Demand Action Jackson
Room TBC	'Supporting children with Additional Learning Needs' Lorraine Petersen	Promoting Energy and Positivity for Staff Working with Children Jenny Mosley	Recognising ALN/SEND in the Early Years Samantha Garner	'The Art of Being Brilliant: Your Wellbeing Launchpad' Andy Cope	Would you like a tool for Building Family Resilience? Kris & Grace
Room TBC	It's Ordinary Magic – Resilience Kris & Grace	How well has your school implemented the ALN Code for Wales? Lorraine Petersen	Hidden autistic sensory differences in your classroom Joanna Grace	HOPE - Being at your best, more of the time Sid Madge	Engagement Through Breathing Techniques & Movement Emma Jones
Room TBC	Bring Me The Head of Willie Wonka Hywel Roberts	Shift Happens: Be the Change Andy Cope	BOTHEREDNESS and C4W: a reverie in stories, stance and pedagogy Hywel Roberts	The Magic of Metacognition for Learning and Wellbeing Jackie Beere	Building Body Confidence, Self-Esteem & Resilience Martin Staniforth
Room TBC	Myth busting sensory strategies big and small Joanna Grace	The Power of Peer Coaching for staff and students Jackie Beere	The New Curriculum Professor Mick Waters	Overcoming barriers to primary maths Ben Harding	The Magic in Education Sid Madge
Room TBC	Happiness in Education Action Jackson	A goal should scare you a little and excite you a lot! Bethan Harding	What's in a label? Neurodiversity Karen Ferguson	'Let me tell you a story' Mary Myatt	How Active Learning will transform your school! Jon Smedley
Room TBC	Working with Disruptive, Defiant & Disrespectful Pupils Nicola S. Morgan	'I've taught it, but have my pupils learnt it?' Mary Myatt	Family Matters Kelly Hannaghan	<b>Music Therapy and Communication</b> Joy Dando	Raising Boys Achievement Gary Wilson
Room TBC	A practical science seminar to inspire future scientists! Awen Haf Ashworth	'Voices of Wellbeing: The Six Circles of Mental & Emotional Wellbeing' Nina Jackson & Kelly Hannaghan		Mental Health Isn't rocket science! Samantha Garner	The Importance of Play and Fun for Children's Wellbeing Jenny Mosley
Room TBC	Cynllunio'n strategol er mwyn paratoi ar gyfer cyflwyno Cwrcwlwm i Gymru Owain Gethin Davies	Seminar Gwyddoniaeth ymarferol i Sbarduno gwyddonwyr y dyfodol! Awen Haf Ashworth	Stori Mistar Mostyn a hanesion eraill Myrddin ap Dafydd	Sesiwn flasu ymarferol a hwyliog! Leisa Mererid	Mapio llafaredd o fewn Maes Dysgu leithoedd, Llafaredd a Chyfathrebu Rhys Glyn
Outside		Outdoor Learning for the New Curriculum: Grab and Go Polly Snape & Carolyn Burkey		Outdoor Learning for the New Curriculum: Grab and Go Polly Snape & Carolyn Burkey	

**Prices per seminar: £10.00 + VAT - Early bird rate (before 6th April) | £15.00 + VAT Standard rate | £20.00 + VAT - Price on the day |**

**50% off for group 10+ (until 6th April 2023)**

Invoice Information: (if the details below are the same for all staff members, you will only need to complete below only once)

Contact Name: \_\_\_\_\_ Email address: \_\_\_\_\_

Address: \_\_\_\_\_ Contact Number: \_\_\_\_\_

Post Code: \_\_\_\_\_ Purchase Order: \_\_\_\_\_



We inspire education staff to become

# Everyday Superheroes

NSM Training and Consultancy offers immersive, practical and high-quality CPD courses and in-house training sessions for education staff across the UK and beyond.



**NSM** Training & Consultancy

[www.nsmc.co.uk](http://www.nsmc.co.uk)



*"Fantastic, passionate and relatable key speakers - could have listened to each one all day long.*

*A wonderful pack provided beforehand and I was really touched by the wonderful treat and lunch voucher - very thoughtful and much appreciated.*

*A thoroughly enjoyable, informative and relevant day - many thanks to you all. More please - walking away inspired, constructively reflective and content"*

We provide a wide variety of courses and conference delivered live online or face-to-face:

- ✦ Positive Behaviour Management & Improving Attendance
- ✦ Engaging Parents & Families
- ✦ Mental Health & Wellbeing
- ✦ ALN/SEND
- ✦ Effective Leadership, Business & Site Management



[bookings@nsmtc.co.uk](mailto:bookings@nsmtc.co.uk)



01766 549725

## TERMAU AC AMODAU / TERMS & CONDITIONS

1. This booking form is issued to confirm your place on the seminar(s) at the National Education Show (live online or face to face).
  2. Full payment must be made within 28 days of you registering by submitting this form. If payment is not made prior to the show date, the National Education Show ("NES") reserves the right to refuse entry to you/the delegate. Once payment has been received a receipt will be sent.
  3. The show details are correct at time of publication but the National Education Show reserves the right to alter the date, time, venue, trainer and/or show without prior notice due to any unforeseen circumstances.
  4. National Education Show reserves the right to cancel any advertised seminars if deemed necessary by NES, at its sole discretion.
  5. Please note that venue and/or online platforms are subject to change. On the unusual occasion where a venue and/or online platform change is necessary, NES will provide a venue within the same vicinity and/or an alternative online platform. Please read your joining instructions carefully to see the final and correct venue directions and/or online platform.
  6. While it is the intention of the NES to provide (for face-to-face show) you/delegate with a physical venue to deliver the show, NES reserves the right, at its sole discretion, to alter the method of delivering the show (including, but not limited to, delivering the exhibition & seminars online).
  7. For physical venues we regret that any expenses incurred, cannot be reimbursed. We strongly advise you to wait for your joining instructions before making travel/accommodation arrangements or to email our office on [info@nationaleducationshow.com](mailto:info@nationaleducationshow.com) to check final details.
  8. Please note it is your/delegate responsibility to ensure the delegate's email address on the booking form is correct for ticketing purposes. If you haven't heard from us, please email [info@nationaleducationshow.com](mailto:info@nationaleducationshow.com) at least 3 weeks before the show date.
  9. This contract is valid with or without a purchase order number.
  10. Please note that the NES accepts no responsibility or liability for any accidents or losses that occur at show venues and/or where the live online courses is accessed from.
  11. Cancellation Policy: By completing and returning this booking form you and/or your school/organisation agree to pay the NES the fees specified.
  12. For non-attendance on the 'free seminar scheme' where there is a charge for seminars the Customer will be invoice the fee outlined in the booking form.
  13. You may substitute delegates on a seminar you have booked, free of charge at any time.
  14. Cancellation fees for training/consultancy are as follows:  
Notice Provided Cancellation Fees.  
More than 28 days: No Charge  
14 – 28 days: 50% of original fee  
Less than 14 days: 100% of original fees
  15. Once we have received your completed booking form, we will send you a confirmation email and invoice. If you have any questions or queries, please email [info@nationaleducationshow.com](mailto:info@nationaleducationshow.com) or phone 01766 772927.
  16. The contract between us, which is the subject of these Terms and Conditions, shall be governed by and construed in accordance with English law (including in relation to non-contractual disputes or claims) and we both agree to submit to the exclusive jurisdiction of the English Courts (including in relation to non-contractual disputes or claims).
  17. No person who is not a party to this contract between us, shall have any rights to enforce its terms and conditions.
  18. The National Education Show Ltd shall not be liable to the Customer for any delay or failure to perform NES Ltd's obligations under the Contract, if the failure is due to any cause beyond NES reasonable control (including, but not limited to, strikes, lock-outs or other industrial dispute, failure of a utility service or transport network, act of God, war, riot, civil commotion, malicious damage, shutdown due to pandemic (whether due to a new or a reoccurrence of a pandemic), compliance with any law or governmental order, rule, regulation or direction, accident, breakdown of plant or machinery, fire, flood, storm or default of suppliers or subcontractors). NES shall not be liable for any loss (whether direct or indirect) suffered by the Customer (except in respect of death or personal injury caused by NES negligence) including loss of profits arising out of performance of the Contract by NES (or its servants or agents).
  19. Data protection: By entering your details in the fields above, you agree to allow NES to contact you by mail, email, telephone. Should you not wish us to contact you, please let us know using the address above.
  20. We hope that you are completely happy with our service, but if something does go wrong, we would like to know about it so that we can put things right and ensure that it does not happen again.
  21. We will process your personal data in accordance with our privacy statement a copy of which is available on our website [www.nationaleducationshow.com](http://www.nationaleducationshow.com)
  22. Notice: we will send you promotional material in accordance with the terms of our privacy statement which is available on our website at [www.nationaleducationshow.com](http://www.nationaleducationshow.com). We will update you via email (no more than twice a week) regarding NES's future shows, speakers, partners and exhibitors, courses. You can unsubscribe from our future emails at any time by clicking the unsubscribe button on one of our emails.
- Thank you for booking with the National Education Show Ltd

*If you have any special requirements, please note on your booking form.*

*Oes gan unrhyw un o'ch staff / cynrychiolwyr unrhyw ofynion arbennig neu anghenion dysgu ychwanegol y dylem fod yn ymwybodol ohonynt, nodwch ar y ffurflen archebu.*