



The National  
**EDUCATION**  
Show

OCT  
**6<sup>th</sup>**  
2023

**Cardiff**  
City Hall

Incorporating the **ALN / SEND Show**

## Show Guide



Visit our Website

**50%  
OFF**

for group bookings of  
10+ delegates  
until 2nd June 2023

@NationalEdShow  
#NESCYMRU2023

Working with:



# Are you looking to **Inspire, Support** and **Develop Great Learners?**

Simple steps to make your **National Education Show** experience **enjoyable, informative** and **beneficial**.



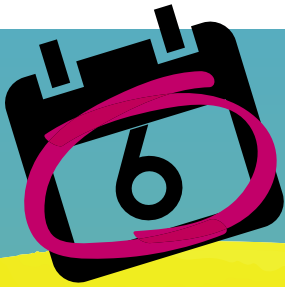
“

All teachers, leaders and support staff in the Rainbow Federation had an informative and interesting day. By attending the National Education Show we ensured all members of staff had access to professional development which was relevant to them and the opportunity to network with other colleagues during the day.

**Rhian Lundrigan**

*Executive Headteacher,  
The Rainbow Federation - Bryn Hafod and Glan yr Afon Primary Schools*

”



**Don't forget to add the date to your calendar!**

**Can't make the Cardiff show?**

Don't worry you can book your **FREE** entry pass at the **Llandudno National Education Show, 16 June 2023.**

To book your pass go to  
[www.nationaleducationshow.com](http://www.nationaleducationshow.com)

“

Attending the National Education Show allowed our staff the opportunity to tailor their CPD according to their own personal needs. The variety of seminars they could choose gave them inspiration, enjoyment, innovative ideas for teaching and a real boost to their wellbeing. It was also a unique opportunity to expose all our staff to the latest techniques and resources presented by many exhibitors to inspire their enthusiasm for developing new practice. They took back to school many ideas and inspiration that enabled them to develop their pedagogy and begin implementing innovative ideas for a new curriculum.

**T Griffith**

*Assistant Head, Cyfarthfa High School*

”

**Check out what happened at last Show in Cardiff**



# About NES 2023

## Welcome



We would like to welcome you to the National Education Show and the National ALN/SEND Show live in Cardiff.

It's great to be back in Cardiff to host our seventh show as Wales' biggest education show designed to deliver even more seminars, services and products.

Our show this October is all about celebrating education and teaching by bringing together thousands of educational professionals to network, experience our exciting exhibition and seminars. The show is full of innovative ideas and solutions, as well as engaging CPD accredited seminars which are bursting with practical strategies and ideas to inspire and empower staff, children and young people. Additionally, we also have multiple seminars available in Welsh.

We can't wait to share this fantastic day with you all.



**Nicola S Morgan**  
Founder & Director



**Einir A Williams**  
Director



## Show Date & Times

**Friday 6th October 2023 | 08.00 - 16.00**

### VENUE:

Cardiff City Hall, Cathays Park, Cardiff  
CF10 3ND

### FOOD:

Food and drinks will be available to purchase from the City Hall cafe located on both floors.

### WI-FI:

You can access free wi-fi throughout the show. This can be found as Cardiff Free Wifi on your device.

### TRAVEL & PARKING:

The venue is just a five-minute walk from Cardiff Queen Street Station. NCP car parks are located within walking distance of venue.

### SEATING:

There are seating areas in the cafés.

### PRAYER ROOM:

A prayer room is also available to use on the day - if required please ask a member of staff to direct you there.

### PHOTOGRAPHY:

PLEASE NOTE THAT THIS PUBLIC EVENT IS BEING FILMED. You may be recorded and may appear in a production or promotion in conjunction with the day's event.

Working with:



Agored Cymru is a Welsh awarding body, leading education in Wales, for Wales. We engage with schools so they can have the very best qualifications and services, meeting the needs of the new Curriculum for Wales and beyond.

[www.agored.cymru](http://www.agored.cymru)



We provide a large range of courses, expert guidance, publication, conferences as well as innovative resources to motivate staff and empower schools.

[www.nsmc.co.uk](http://www.nsmc.co.uk)



The School of Educational Sciences has an established reputation in the fields of teacher training, professional development and leadership.

[www.bangor.ac.uk](http://www.bangor.ac.uk)



Nasen, The National Association for Special Education Needs, is a charity organisation that supports thousands of practitioners by providing sector leading information, training and resources to enable staff to meet the needs of all pupils.

[www.nasen.org.uk](http://www.nasen.org.uk)



NAHT is the largest union and professional association for senior and middle leaders in education. We are solution driven and add value to support and protect your role. Join today.

[www.hope-education.co.uk](http://www.hope-education.co.uk)



The Books Council of Wales is a national charity that supports the publishing industry in Wales. An important element of our work is promoting literacy and reading for pleasure. We do this by ensuring a regular supply of publications and co-ordinating schemes and special events that celebrate reading in a fun and attainable for all.

[www.books.wales](http://www.books.wales)

## Contents

About NES	4
Seminar Timetable	7
Seminars & Speakers	8-15
Booking Form	17



**Spread the word!**

Don't forget to include the following, when talking about us on social media!

**#NESCYMRU2023**  
**@NationalEdShow**

**National Education Show,**  
27 Morfa Gaseg  
Llanfrothen, LL48 6BH

**01766 772 927**  
**info@nationaleducationshow.com**  
**www.nationaleducationshow.com**

**@NationalEdShow**

**/NationalEducationShow**

**@NationalEdShow**





Mae Marc Ansawdd Agored Cymru, sef mesurydd rhagoriaeth ar gyfer digwyddiadau a rhaglenni dysgu, wedi cael ei ddyfarnu i'r Sioe Addysg Genedlaethol eleni.

Mae hwn yn cydnabod ac yn dathlu arferion rhagorol ym maes darparu dysgu yng Nghymru. Drwy fynd i'r sioe, byddwch yn ennill **5 awr DPP** am eich cyfranogiad.

Mae Marc Ansawdd Agored Cymru yn gwerthuso digwyddiadau a rhaglenni dysgu yn erbyn safonau proffesiynol ac mae'n seiliedig ar arferion da ac ymchwil cyfredol ym maes addysg a hyfforddiant.

I gael rhagor o wybodaeth, cysylltwch â [marc.ansawdd@agored.cymru](mailto:marc.ansawdd@agored.cymru)

This year's National Education Show has been awarded the Agored Cymru Quality Mark, a measure of excellence for learning programmes and events.

This recognises and celebrates outstanding practice for delivering learning in Wales. By attending the show you will gain **5 CPD hours** for your participation.

The Agored Cymru Quality Mark evaluates learning programmes and events against professional standards and is underpinned by good practice and current research in education and training.

To find out more, contact [quality.mark@agored.cymru](mailto:quality.mark@agored.cymru)

# Seminar Timetable

All seminars accredited by



9:00 - 9:50

10:30 - 11:20

12:00 - 12:50

13:30 - 14:20

15:00 - 15:50

Room TBC	Maths - Scaffolding for Success <b>Karen McGuigan</b>	Resilient Leadership <b>Julie Rees</b>	Metacognition & Wellbeing <b>Will Ord</b>	Youth Work's Contribution to the Education of Young People <b>Gavin Gibbs &amp; Marco Gill</b>	Creativity: learn, unlearn, relearn <b>Martin Illingworth</b>
Room TBC	'I'M NOT NAUGHTY!' Supporting children with Oppositional Demand Disorder (ODD) and Pathological Demand Avoidance (PDA) <b>Karen Ferguson</b>	Behaviour Change - Winning Hearts and Minds for Consistent Practices <b>Ollie Frith</b>	Building a Culture of Oracy in the Classroom <b>Tim Perris</b>	Reading & Writing For Life <b>Hywel Roberts &amp; Martin Illingworth</b>	Embedding Regular Testing into the Curriculum: Challenges & Solutions <b>Dr Katy Burgess</b>
Room TBC	The Power of Collaboration <b>Alison Kriel</b>	Digital Tools to Enhance Teaching & Learning Across the Curriculum <b>Nick Evans</b>	Working with Disruptive, Defiant & Disrespectful Pupils <b>Nicola S. Morgan</b>	Values as an Organisational Compass <b>Julie Rees</b>	MINDSET! What is it? How do I improve it? What happens if I lose it? <b>Ross McWilliam</b>
Room TBC	Using Vibrant Quality Circle Times to Promote Child Wellbeing in Positive Calm Classrooms <b>Jenny Mosley</b>	Developing Inclusive Communication Through Brick Play <b>Niki Jones</b>	Giving Teachers a Voice <b>Alison Kriel</b>	The Importance of Play & Playgrounds for all Children <b>Jenny Mosley</b>	Rethinking Wellbeing in Education <b>Kelly Hannaghan</b>
Room TBC	Using CBT to Make Positive Behaviour Changes <b>Samantha Garner</b>	Effective Parental Communication: Improving Pupil/Student Attendance & Behaviour <b>Nicola S. Morgan</b>	Top time saving tips for the busy SENCo/ALNCo <b>Ginny Bootman</b>	The Art of Argument <b>Will Ord</b>	I Hurt Inside; Making the Unconscious Conscious <b>Joy Dando</b>
Room TBC	'Voices of Wellbeing' - The Six Circles of Mental and Emotional Wellbeing <b>Nina Jackson &amp; Kelly Hannaghan</b>	'The Gift of Giving' for pupil wellbeing, ALN and SEMH <b>Nina Jackson</b>	How can behaviour "be sensory"? And do sensory toys help or hinder us? <b>Joanne Grace</b>	Maths - Teach for Today's World <b>Karen McGuigan</b>	Engaging the Disengaged <b>Calvin Eden</b>
Room TBC	Using Drama and Storytelling: a reverie in Botheredness and C4W <b>Hywel Roberts</b>	The New Curriculum <b>Prof Mick Waters</b>	Talk for Reading <b>Pie Corbett</b>	Supporting TAs to Develop Metacognition <b>Sara Alston</b>	The Holy Grail - Is it what we really need? <b>Dr Helen Jones</b>
Room TBC	A Practical Science Seminar to Inspire Future Scientists! <b>Awen Ashworth</b>	What if some of your knowledge and understanding around mental health, well-being and performance was actually holding you back, or even hurting you? <b>Ross McWilliam</b>	The Fundamentals of Attachment in Practice: Supporting children/young people in school & college <b>Karen Ferguson</b>	Ensuring Behaviour Sanctions Don't Compound Mental Health Issues <b>Samantha Garner</b>	Just why "smart" goals set us up for mediocrity... AT BEST! <b>David Hyner</b>
Room TBC	Dinasyddion y dyfodol <b>Megan Rhys Williams</b>	Gwyddoniaeth ymarferol i Sbarduno gwyddonwyr y dyfodol! <b>Awen Ashworth</b>	Cefnogi'r Gweithlu Addysg i Ddysgu Cymraeg <b>Donna Lewis</b>	Cadw a chynnal athrawon o fewn y proffesiwn - beth sydd angen ei feithrin mewn darpar athrawon? <b>Rhian Tomos</b>	Prosiect RILL (Rhaglen Iaith a Llythrennedd) - Cwrs 15 wythnos am ddim i ysgolion cynradd Cymru a Lloegr. <b>Geran Hughes</b>
Outside Venue		Play and learning outdoors <b>Meriel Jones</b>	Play and learning outdoors <b>Meriel Jones</b>	Play and learning outdoors <b>Meriel Jones</b>	

All seminars accredited by



# Seminars & Speakers

9.00-9.50

## Maths – Scaffolding for Success

Curriculums and teaching methods change but is the way we are teaching maths today the best way for those with ALN/SEN? This seminar looks at popular topics such as Money, Time, Times Tables, Data Handling and looks at ways to teach them given the world we live in today. It explores ways to utilise technology and student motivation to teach.



Presented by:

**Karen McGuigan**  
Education Consultant

Language: **English** | Audience: **All plus ALN/SEND**

9.00-9.50

## 'I'M NOT NAUGHTY!' Supporting children with Oppositional Demand Disorder (ODD) and Pathological Demand Avoidance (PDA)

This seminar is designed to give participants an insight, understanding and provide a kit bag of strategies. Participants will be given a range of options for inclusive educational approaches and uncomplicated strategies to meet the needs of children and young persons with PDA/ODD to support them effectively.



Presented by:

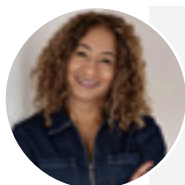
**Karen Ferguson**  
Education Consultant,  
NSM Training & Consultancy

Language: **English** | Audience: **All plus ALN/SEND**

9.00-9.50

## The Power of Collaboration

At a time when morale is dropping, fostering community and collaboration, not competition, is key for the future of education. It's so important to celebrate the things that are going well in our schools, no matter how small, and collaborate with one another to help share the burdens. We need to unlearn the habits drilled into us by competitive thinking. We will all do better, including our students, when we take the time to appreciate our own achievements, and the achievements of others, and find a way to come together and work alongside one another.



Presented by:

**Alison Kriel**  
Education Consultant

Language: **English** | Audience: **All**

9.00-9.50

## Using Vibrant Quality Circle Times to Promote Child Wellbeing in Positive Calm Classrooms

The Vale of Glamorgan schools reported post-Covid children's reading and writing skills had regressed. Literacy skills, conversational confidence, turn-taking, tolerance and reading non-verbal cues had been impacted by lockdowns and closures. Encouraging children to converse through vibrant, proactive Circle Times promotes communication skills and expression, aiming to promote wellbeing using this safe forum and other strategies.



Presented by:

**Jenny Mosley**  
Education Consultant & Author

Language: **English** | Audience: **EY, PRIM, ALN/SEND**

9.00-9.50

## Using CBT to Make Positive Behaviour Changes

If you want to change disruptive behaviour in students, punitive measures are highly unlikely to work, they often lead to more resentment and are destructive to teacher pupil relationships. If you want to make positive change then using Cognitive Behavioural Therapy tools have been proved to be an effective method of intervention and is recommended by NICE and DfE. This session give you all the tools needed to immediately begin using CBT techniques in your setting including working on motivating students to make positive changes.



Presented by:

**Sam Garner**  
Education Consultant

Language: **English** | Audience: **All**

9.00-9.50

## 'Voices of Wellbeing' - The Six Circles of Mental and Emotional Wellbeing

Voices of Wellbeing, Nina and Kelly will share with you an amazing wellbeing programme that can support the mental and emotional health of everyone in your school community. From Purpose, Relationships, Emotional Learning, Self-Care, Gratitude and Celebration you will find ways to embed these in your school curriculum and pastoral systems. When mental and emotional health is such a concern, this session will give you ideas, strategies and the skills to use purposeful interventions so that everyone can flourish.



Presented by:

**Nina Jackson & Kelly Hannaghan**  
Education Consultants

Language: **English** | Audience: **All**



All seminars accredited by



# Seminars & Speakers

9.00-9.50

## Using Drama and Storytelling: a reverie in Botheredness and C4W

Based on the best selling teacher book, this session will offer a high speed rollercoaster ride focussing on getting children bothered about what they're learning! Hywel will share ways to develop a pedagogical toolkit, strategies to harness our own professional imaginations and look at making the mundane irresistible.



Presented by:

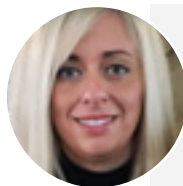
**Hywel Roberts**  
Education Consultant & Author

Language: **English** | Audience: **All**

9.00-9.50

## A Practical Science Seminar to Inspire Future Scientists!

The session, led by Awen Ashworth, will give you the opportunity to learn about Science in the Early Years. As a practical session, you will have a go at the simple Science experiments that you can deliver in the classroom. The session will give you an insight to the different methods of introducing Science by using simple equipment. With the new Curriculum in Wales now being delivered, both Science and Technology is one of the 6 areas of learning and experience.



Presented by:

**Awen Ashworth**  
Teacher, Scientist & Director, Sbarduno

Language: **English** | Audience: **All**

9.00-9.50

## Dinasyddion y dyfodol

Ymunwch â Swyddogion Addysg ac Ymgysylltu â Phobl Ifanc Senedd Cymru i ddysgu am ffyrdd y gallwch helpu eich dysgwyr i ddeall eu hawliau democrataidd fel rhan o'r Cwricwlwm Newydd i Gymru.



Presented by:

**Megan Rhys Williams**  
Rheolwr Addysg ac Ymgysylltu â Phobl Ifanc, Senedd Cymru

Language: **Cymraeg** | Audience: **All**

10.30 - 11.20

## Resilient Leadership

This seminar will introduce the audience to the Resilience Leaders Elements Programme. It will guide them through the four elements that work together to develop Resilient Leaders and introduce some of the 12 facets in greater depth. The seminar will also demonstrate how to use RLE as part of developing resilient muscle strength with middle and senior leaders in your setting.



Presented by:

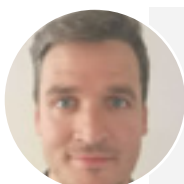
**Julie Rees**  
RLE Consultant, CCPC Co-active coach and C-me Accredited Consultant

Language: **English** | Audience: **All**

10.30 - 11.20

## Behaviour Change – Winning Hearts and Minds for Consistent Practices

Great behaviour management is counterintuitive. Ollie will show you how to adjust behaviour to support a wider culture change, how intuitive emotional responses lead to deep-rooted problems and why your whiteboard is key. He will lead you through effective strategies that will make your school ripple with consistent practice. Ollie will gently uncover the gremlins in your school culture and show you how to make rapid progress in 30 days identifying a clear understanding of what makes change difficult to embrace with a clear, identifiable catalyst for a transformation in school culture.



Presented by:

**Ollie Frith**  
CPI Education and Behaviour Lead

Language: **English** | Audience: **All plus ALN/SEND**

10.30 - 11.20

## Digital Tools to Enhance Teaching & Learning Across the Curriculum

A fully interactive seminar to outline the latest digital tools used to enhance the teaching and learning opportunities we provide our pupils/students, across the key stages. Delegates will experience a 'day in the life' of a teacher fully immersed in the use of digital technology and will be encouraged to participate throughout. From making the most of devices available, utilising workflow solutions such as Google Workspace for Education and Office 365, to the latest 3rd party applications making learning accessible for all.



Presented by:

**Nick Evans**  
Partner Technologist, Apple

Language: **English** | Audience: **All**

All seminars accredited by



# Seminars & Speakers

10.30 - 11.20

## Developing Inclusive Communication Through Brick Play

Brick Play is a play-based approach using toy bricks to develop communication and interaction skills in a fun and inclusive way. Use of the approach can be tailored to individuals to ensure that every session is as accessible as possible regardless of ability, diagnosis and age. Niki Jones a highly specialist speech and language therapist who has a wealth of experience in delivering Brick Play for over a decade in schools across the country, will discuss how to implement Brick Play for aided communicators by creating inclusive communication environments using robust communication and visual supports.



Presented by:

**Niki Jones****Highly Specialist Speech and Language Therapist**Language: **English** | Audience: **All plus ALN/SEND**

10.30 - 11.20

## Effective Parental Communication: Improving Pupil/Student Attendance & Behaviour

Often many cases of poor attendance and behaviour are a direct result of a lack of effective engagement between parents and school. This may be through parents not contacting the school - either to report and talk about the reason for their child's absence and to seek support, or not being aware of the school's expectations. This session will look at practical and proved ways to communicate and support parents to get to the root of the problem and improve attendance and behaviour.



Presented by:

**Nicola S. Morgan****Education Consultant, Teacher & Author**Language: **English** | Audience: **All**

10.30 - 11.20

## 'The Gift of Giving' for pupil wellbeing, ALN and SEMH

The gift of giving and sharing professional knowledge and expertise to enhance the wellbeing of all pupils. From kindness, listening to pupils and meeting their emotional and learning needs, Nina Jackson will gift you with some amazing practical strategies and methodologies to help students develop their resilience, self-confidence and application to learning so that they have hope and purpose to develop their unique magical ingredients.



Presented by:

**Nina Jackson****Education Consultant & Author**Language: **English** | Audience: **All plus ALN/SEND**

10.30 - 11.20

## The New Curriculum

Pedagogy and assessment to match and progression for everyone. We are getting there! This session will examine the way the vision for 'Successful Futures' is becoming a reality.



Presented by:

**Prof. Mick Waters****Former Director of the Curriculum at the QCA (Qualifications and Curriculum Authority)**Language: **English** | Audience: **All**

10.30 - 11.20

## What if some of your knowledge and understanding around mental health, well-being and performance was actually holding you back, or even hurting you?

This seminar will start to unpick some of our long held and established beliefs around what makes positive mental health and how this interacts with our well-being. It delves beyond some of the 'known' knowledge and looks at how we might challenge how we think and interpret our own world narrative.



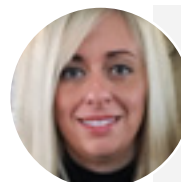
Presented by:

**Ross McWilliam****Mindset Performance Coach**Language: **English** | Audience: **All**

10.30 - 11.20

## Gwyddoniaeth ymarferol i Sbarduno gwyddonwyr y dyfodol!

O dan arweiniad Awen Ashworth fe gewch gyfle i ddysgu am Wyddoniaeth yn y blynyddoedd cynnar. Bydd hwn yn sesiwn ymarferol ble byddwch yn cael cyfle i roi cynnig ar wneud arbrofion Gwyddoniaeth syml y gallir eu gwneud eto yn eich lleoliad. Bydd y gweithdy yn rhoi mewnolwg i ddulliau newydd o gyflwyno Gwyddoniaeth gan ddefnyddio offer syml. Gyda'r Cwricwlwm newydd yn yr arfaeth, mae Gwyddoniaeth a Thechnoleg yn un o'r chwe maes dysgu ac arbenigedd.



Presented by:

**Awen Ashworth****Athrawes, Gwyddonydd a Chyfarwyddwr Cwmni Sbarduno**Language: **Cymraeg** | Audience: **Cyn**

All seminars accredited by



# Seminars & Speakers

10.30 - 11.20 - **Outside**

(repeated at 12:00-12:50 &amp; 13:30-14:20)

## Health and Wellbeing Outdoors - effective ways of engaging pupils

This practical hands-on workshop will awaken the senses and provide opportunities to connect with nature. Being outdoors provides real world experiences to promote thinking and problem-solving skills. This session will encourage participants to discover ways to improve motor skills and increase levels of physical activity as well as explore creativity and inspiration through easy activities and games. All of which encourage engagement in learning and increased academic achievement. Participants will be able to enhance their skills as a facilitator and understand the role of adults in the outdoor environment. The outdoors is a place to nurture ourselves and those around us. It helps to reduce stress and fatigue which in turn improves our health and wellbeing. The session will be outside in Bute Park, exploring the green heart of the city. Please bring outdoor clothing and sturdy shoes/wellies to wear.



Presented by:

**Meriel Jones****Bute Park Education Officer**Language: **English** | Audience: **All**

12.00 - 12.50

## Metacognition & Wellbeing

Metacognition is often summarised as a pupil's ability to "plan, monitor & evaluate", but it can also be about self-awareness and self-regulation. This workshop will give colleagues a very practical and engaging introduction to the power of metacognition in the process of learning and, indeed, living.



Presented by:

**Will Ord****Teacher Trainer and Keynote Speaker**Language: **English** | Audience: **Pri, Sec, FE**

12.00 - 12.50

## Building a Culture of Oracy in the Classroom

Empowering staff with the skills, tools and strategies to implement Oracy as a purposeful activity in the classroom and around the school. Oracy is a powerful tool for all subjects and this workshop explores how it can be used to inspire pupils to 'find their voice', express opinions, build their confidence and deepen their learning.



Presented by:

**Tim Perris****Education consultant and Talk The Talk Lead Trainer**Language: **English** | Audience: **All**

12.00 - 12.50

## Working with Disruptive, Defiant and Disrespectful Pupils

It is no secret that today's classrooms can be a challenging environment for learning. Many pupils are coming to school/college exhibiting challenging behaviours, not only do these challenging behaviours affect educators' ability to teach a lesson and maintain control, but they also disrupt the productivity of the class as a whole. This seminar is designed to challenge the typical perceptions around behaviour as well as including a variety of tools, strategies and techniques help effectively manage challenging behaviour as well as promote positive behaviour.



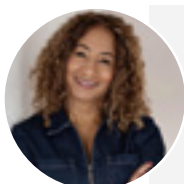
Presented by:

**Nicola S. Morgan****Education Consultant, Teacher & Author**Language: **English** | Audience: **All**

12.00 - 12.50

## Giving Teachers a Voice

I am not going to stand here and pretend there is a quick fix to the challenges every school faces today but we can all start by giving teachers a voice. Teachers feeling unheard has become a key contributor to today's ongoing mental health and wellbeing challenges. By empowering teachers and offering them both choice and voice, you will see lasting benefits. In this session, I will speak about how you can do this and case studies of how empowering teachers and emphasising diversity will foster greater collaboration to achieve greater success.



Presented by:

**Alison Kriel****Education Consultant**Language: **English** | Audience: **All**

12.00 - 12.50

## Top time saving tips for the busy SENCo/ALNCo

Working to meet the needs of a diverse range of pupils/students is challenge in both schools and colleges. For the SENCo/ALNCo this is even more challenging, given the specific and complex needs of the pupils/students they look after. Learning to juggle daily work demands including data, assessments, paperwork can be tricky. This seminar is designed to help the participants to identify parts of their role which take up so much of their time, unpick ways to save time and manage tasks effectively by introducing powerful and flexible tools that are simple to integrate into a daily, weekly and monthly basis.



Presented by:

**Ginny Bootman****Classroom practitioner, SENCO and Headteacher**Language: **English** | Audience: **All plus ALN/SEND**

SEND Seminar

All seminars accredited by



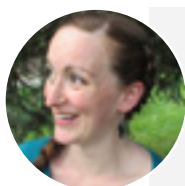
# Seminars & Speakers

12.00 - 12.50

SEND Seminar

## How can behaviour "be sensory"? And do sensory toys help or hinder us?

This seminar explores what is going on behind "sensory behaviour" and looks at whether the sensory toys that are sold to us help support children to maintain socially expected behaviour or whether they're simply a distraction from learning. Attendees will gain practical insight they can use in their classrooms right away, as well as technical knowledge they can use to evaluate resources and strategies.



Presented by:

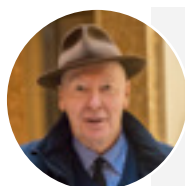
**Joanne Grace**  
Sensory Engagement and Inclusion Specialist

Language: **English** | Audience: **All plus ALN/SEND**

12.00 - 12.50

## Talk for Reading

Pie will take delegates through the three stages of the Talk for Reading process that enables children to become strategic readers who can comprehend independently and express their understanding coherently. They not only love reading but can talk or write about text powerfully.



Presented by:

**Pie Corbett**  
Inspirational Trainer, Poet, Author and Editor

Language: **English** | Audience: **All**

12.00 - 12.50

SEND Seminar

## The Fundamentals of Attachment in Practice: Supporting children/young people in school & college

This session looks at the fundamentals of Attachment Theory such as brain development, the attachment cycle, symptoms and presenting behaviours associated with insecure attachment. Knowledge of attachment is now recognised as important for those who work with children and young people. Complex trauma means that very often children/young people have developed maladaptive coping strategies that need to be undone so they can relearn appropriate skills for social integration. This session is full of practical interventions and strategies to support children and adolescents with Attachment disorders.



Presented by:

**Karen Ferguson**  
Education Consultant

Language: **English** | Audience: **All plus ALN/SEND**

12.00 - 12.50

## Cefnogi'r Gweithlu Addysg i Ddysgu Cymraeg

Cyflwyniad ar y rhaglen genedlaethol o gyrsiau dysgu a defnyddio'r Gymraeg gan Brif Weithredwr Y Ganolfan Dysgu Cymraeg Genedlaethol. Mae'r Ganolfan yn arwain y sector Dysgu Cymraeg i oedolion ac wedi datblygu porth Cenedlaethol newydd sy'n cyflwyno rhaglen o weithgaredd Dysgu Cymraeg i'r gweithlu addysg.



Presented by:

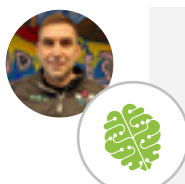
**Donna Lewis**  
Dirprwy Brif Weithredwr - Y Ganolfan Dysgu Cymraeg Genedlaethol

Language: **Cymraeg** | Audience: **Pawb**

13.30 - 14.20

## Youth Work's Contribution to the Education of Young People

Youth Work is often valued (particularly by young people) but not always well understood. In this session, you will learn how, via a voluntary relationship with a Youth Worker, young people learn, develop and progress by gaining skills and knowledge in a variety of settings. Youth Work takes place in both formal (e.g. schools, colleges) and less formal settings (e.g. Youth Clubs, Community Centres, hospitals and on the streets), as well as digitally, with a focus on personal and social development. Youth Workers are also skilled at understanding and breaking down barriers preventing access to services such as formal education and many are effective leaders, at all levels.



Presented by:

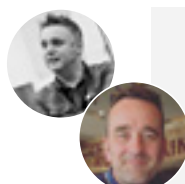
**Gavin Gibbs**  
Senior Youth Lead, Torfaen Council  
**Marco Gill**  
Chief Executive Officer, Promo Cymru

Language: **English** | Audience: **Sec, FE, ALN/SEND**

13.30 - 14.20

## Reading & Writing For Life

Motivating your students through genuine engagement is the route to successful learning. Helping students see how they will be richer from your lessons and the relevance of those lessons to their lives is absolutely essential. Hywel and Martin offer some practical ideas and deep thinking about success in your classroom. They will consider how to tell imaginative stories and develop reading and writing skills useful to the world of the 21st Century. They will also work on writing stories and consider the ways in which reading and writing can broaden your world, your expectations, your confidence and your skills as a communicator. Looking at real writing for real purposes with genuine audiences is at the heart of developing strong approaches to how we read and how we write.



Presented by:

**Hywel Roberts**  
Teacher, Education Consultant, Author  
**Martin Illingworth**  
Senior Lecturer, Sheffield Hallam University

Language: **English** | Audience: **All**



All seminars accredited by



# Seminars & Speakers

13.30 - 14.20

## Values as an Organisational Compass

Being a values-based school means following a model of seven elements in every aspect of school life, from how guests are greeted, to how conflict is mediated between pupils. This session will also look at the authentic modelling by adults, developing an inner curriculum, creating a values-based environment and curriculum, developing quality leadership and the development of an ethical vocabulary. During this seminar you will leave with an understanding of how you can breathe even more life into the values of your school and community.



Presented by:

**Julie Rees****RLE Consultant, CCPC Co-active coach and C-me Accredited Consultant**Language: **English** | Audience: **All**

13.30 - 14.20

## The Importance of Play & Playgrounds for all Children

Reports show that some pupils are finding unstructured playground play and socialisation difficult post-Covid. Many schools are having huge problems in the playground. Play is crucial to children's wellbeing, resilience and ability to learn, with play laying the foundations for literacy, communication and spontaneity. Jenny will highlight key common issues that are found in playgrounds currently and ways of encouraging healthy, active play, good communication between supervisors and children and ideas that children can help to take responsibility for their behaviour and support the problem-solving process to finding solutions to playground issues.



Presented by:

**Jenny Mosley****Education Consultant & Author**Language: **English** | Audience: **EY, Pri, ALN/SEND**

13.30 - 14.20

## The Art of Argument

How can children/young people learn to argue skilfully, both emotionally and with good reasons? Argumentation is a key life skill and central to many essays and exams. This workshop will be practical, fun, and give colleagues great techniques for helping your pupils/students to be more reasonable!



Presented by:

**Will Ord****Teacher Trainer and Keynote Speaker**Language: **English** | Audience: **Sec, Pri, FE**

13.30 - 14.20

## Maths – Teach for Today's World

Curriculums and teaching methods change but is the way we are teaching maths today the best way for those with ALN/SEN? This seminar looks at popular topics such as Money, Time, Times Tables, Data Handling and looks at ways to teach them given the world we live in today. It explores ways to utilise technology and student motivation to teach.



Presented by:

**Karen McGuigan****Education Consultant**Language: **English** | Audience: **All plus ALN/SEND****SEND Seminar**

13.30 - 14.20

## Supporting TAs to Develop Metacognition

The Education Endowment Foundation indicates that explicitly teaching metacognitive strategies, such as planning, monitoring and evaluating, can have a significantly positive impact on pupil outcomes. The guidance report, outlines seven key recommendations, which offer teachers and senior leaders' practical advice on how to develop their pupils' metacognitive skills and knowledge, however teaching assistants (TAs) are in fact best placed to achieve this goal. This session will look at ways to support TAs to develop the understanding to help pupils develop independent learning skills and manage their own learning.



Presented by:

**Sara Alston****SENCo and an independent SEND and Safeguarding Consultant and Trainer**Language: **English** | Audience: **All**

13.30 - 14.20

## Ensuring Behaviour Sanctions Don't Compound Mental Health Issues

One of the areas education seems to struggle with is behaviour management. We continue to use confrontational, punitive systems that are ineffective. What we also need to address is their impact on the mental health of students, especially Neurodiverse students. This session will look at how common elements of behaviour management systems can be damaging to student mental health, as well as potentially being against safeguarding guidance and The Equality Act 2010. It will discuss how your setting can assess your behaviour management system and make adaptations to reduce the harm for the student.



Presented by:

**Sam Garner****Education Consultant**Language: **English** | Audience: **All**

All seminars accredited by

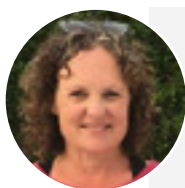


# Seminars & Speakers

13.30 - 14.20

## Cadw a chynnal athrawon o fewn y proffesiwn - beth sydd angen ei feithrin mewn darpar athrawon?

Honnir gan sawl ymchwiliad bod athrawon ledled y byd yn gadael y proffesiwn un ai yn fuan yn eu gyrfa neu'n ymddeol yn gynnar iawn (Harrison, Newman & Roth, 2006; Perrachione, Rosser & Petersen, 2008; Dolton & Van der Klauuw, 1995). Mae'n broblem byd eang, nid dim ond yng Nghymru. Ond sut mae sicrhau bod athrawon yn parhau ac yn ffynnu yn y proffesiwn? Dewch i ddysgu mwy yn y seminar hwn.



Presented by:

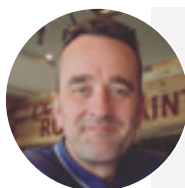
**Rhian Tomos**  
**Darlithydd - Astudiaethau Plentynod ac Ieuencid**

Language: **Cymraeg** | Audience: **Pawb**

15.00 - 15.50

## Creativity: learn, unlearn, relearn

Supporting our pupils to become thoughtful and creative through inventive classroom approaches, expanding how they think and feel about an education.



Presented by:

**Martin Illingworth**  
**Association for the Teaching of English and Associate Speaker with Independent Thinking.**

Language: **English** | Audience: **All**

15.00 - 15.50

## Embedding Regular Testing into the Curriculum: Challenges & Solutions

Over a century of research investigating memory processes has robustly demonstrated that regular testing is beneficial for learning and long-term retention when compared to other learning strategies. However, there is a lack of awareness and understanding of testing and how/why it might benefit learning. Educators may also have concerns about how to successfully embed testing within a course. This workshop will provide an introduction to regular testing, how and why it benefits learning, how educators may embed regular quizzing in their curriculum, and solutions to potential issues they may face in doing so.



Presented by:

**Dr. Katy Burgess**  
**Senior Lecturer in Psychology**

Language: **English** | Audience: **Sec, FE**

15.00 - 15.50

## MINDSET! What is it? How do I improve it? What happens if I lose it?

Educationally, Mindset has often been attributed to Carol Dweck and Barry Hymers as either Fixed or Growth. However, it is more than this. Mindset is linked to how we perceive our world, our expectations, our development of skills and knowledge, our resilience, and indeed, our ability to get support, accept feedback and even being vulnerable. Switching Mindsets in education might well be an asset, that could help us perform better and in so doing, even help us avoid stress and the dreaded burnout. This session will provide participants with a greater understanding as well as strategies to implement.



Presented by:

**Ross McWilliam**  
**Mindset Performance Coach**

Language: **English** | Audience: **All**

15.00 - 15.50

## Rethinking Wellbeing in Education

Wellbeing has very much become a buzz word over the last few years, it's important we get clarity on wellbeing and not hide behind it.

This session will explore a new way of looking at how to develop a robust and resilient community in education, where staff feel equipped to support young people thrive in their learning and to be able to manage future adversity.



Presented by:

**Kelly Hannaghan**  
**Education Consultant**

Language: **English** | Audience: **All**

15.00 - 15.50

## I Hurt Inside; Making the Unconscious Conscious

Music therapy is a reality changer. Music can brighten your mood, reduce stress/ tension as well as improve physical health. Where children have experienced trauma, brain development may be interrupted, leading to functional impairments, affecting mental, emotional and behaviour; health. Within an education setting this can be difficult to manage because the child's unconscious thoughts and feelings can manifest in a range of behaviours including; emotional regulation, disassociation, cognitive ability. Impulse control, self-image and eating disorders. Music Therapy can help and this session shows you how.



Presented by:

**Joy Dando**  
**Music Therapist**

Language: **English** | Audience: **Pri**

All seminars accredited by

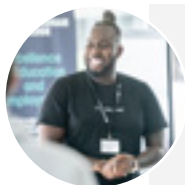


# Seminars & Speakers

15.00 - 15.50

## Engaging the Disengaged

As you all know, youth work is about as far from a 'one size fits all' industry as you could imagine. The common theme across all of our work is the goal to inspire young people to be the protagonists of their own lives and raise their ambitions to a level that matches their potential. Some of the young people we interact with have had this message constantly reinforced throughout their lives by the people and the institutions they have interacted with. Some have not. We pride ourselves in our ability to connect with and inspire young people who may find themselves disengaged and disenfranchised. Across the sector, we all achieve this in a variety of amazing ways.



Presented by:

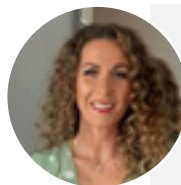
**Calvin Eden**  
**Loud Speaker**

Language: **English** | Audience: **All**

15.00 - 15.50

## The Holy Grail – Is it what we really need?

The main aim of this seminar is to help you think about how you can make a difference to children and young people (CYP) who are experiencing distress. Specific objectives are: to discuss my experience as a Clinical Psychologist and what it has taught me, introduce psychological models that help us think about CYP's behaviour as communication, and suggest some things you can do (individual or organisation) to work with CYP experiencing distress



Presented by:

**Dr. Helen Jones**  
**Clinical Psychologist**

Language: **English** | Audience: **All**

15.00 - 15.50

## Just why "smart" goals set us up for mediocrity... AT BEST!

This seminar will look at how a team of teachers who set a 'MASSIVE' goal can create a HUGE return. David will address the two things that top achievers seek, that most of us avoid, how to get and remain motivated to be more effective and how to take ownership of our commitments.



Presented by:

**David Hyner**  
**Motivational speaker & Amazon multiple No. 1 Author**

Language: **English** | Audience: **All**

15.00 - 15.50

## Prosiect RILL (Rhaglen Iaith a Llythrennedd) - Cwrs 15 wythnos am ddim i ysgolion cynradd Cymru a Lloegr.

Datblygwyd RILL gan Brifysgol Bangor, Prifysgol y Drindod Leeds a Phrifysgol Rhydychen. Mae RILL yn darparu rhaglen iaith a llythrennedd 15 wythnos yn Gymraeg neu yn Saesneg i blant. Blwyddyn 3 a 4. Yn wreiddiol, lansiwyd RILL ar lein ym mis Ebrill 2020 yn sgil cyflwyno cyfyngiadau i atal y Coronafeirws rhag lledaenu. Ar hyn o bryd, mae'r Brosiect yn cael ei ehangu o fewn ysgolion Cymru a Lloegr er mwyn helpu gwella sgiliau iaith, cyfathrebu a darllen plant.



Presented by:

**Geran Hughes**  
**Swyddog Ymchwil a Rheolwr Project RILL Ysgol Gwyddorau Dynol ac Ymddygiadol**

Language: **Cymraeg** | Audience: **Pawb**

## Seminars Tickets

If you would like to attend any of our seminars at The National Education Show Cardiff 2023, make sure you book today!

Early Bird Price:

**£10**  
**+VAT**

Available until midnight  
**2nd June 2023**

Pre-show Price:

**£15**  
**+VAT**

Available until midnight  
**5th Oct 2023**

On the Day Price:

**£20**  
**+VAT**

Available on the day  
**6th Oct 2023**


**50% OFF**

for group bookings of  
10+ delegates  
until 2nd June 2023

@NationalEdShow  
#NESCVMRU2023

To buy your ticket, visit: [www.NationalEducationShow.com](http://www.NationalEducationShow.com)

Limited seminar tickets can be booked on the day **No card machine is available to buy tickets**



We're also hosting the  
show up North!

**16th June 2023**

Venue Cymru, Llandudno

Add the dates to  
your diaries!

Interested in speaking at  
the next show?

Contact us for a speaker application form now!

Email: [nicola@nationaleducationshow.com](mailto:nicola@nationaleducationshow.com)



Rydym hefyd yn dod  
a'r Sioe i'r Gogledd!

Rhowch y dyddiadau  
yn eich dyddiadur

**Mehefin 16eg 2023**

Venue Cymru, Llandudno

Awyddus i gynnal seminar  
yn ein sioe nesaf?

Cysylltwch am ffurflen gais nawr!

Ebost: [einir@sioeaddysggenedlaethol.com](mailto:einir@sioeaddysggenedlaethol.com)



**PLEASE PHOTOCOPY A FORM FOR EACH MEMBER OF STAFF**





Delegate Name: \_\_\_\_\_ School / Organisation \_\_\_\_\_

Delegates email address \_\_\_\_\_ Job Title \_\_\_\_\_

**(Please ensure your email address is individual so CPD hours can be awarded by Agored Cymru).**

Please mark the table below with the seminars that you wish to attend.

 **SEND / ALN Seminars**

	 <b>09:00 - 09:50</b>	 <b>10:30 - 11:20</b>	 <b>12:00 - 12:50</b>	 <b>13:30 - 14:20</b>	 <b>15:00 - 15:50</b>
<b>Room TBC</b>	Maths – Scaffolding for Success Karen McGuigan	Resilient Leadership Julie Rees	Metacognition & Wellbeing Will Ord	Youth Work's Contribution to the Education of Young People Gavin Gibbs & Marco Gill	Creativity: learn, unlearn, relearn Martin Illingworth
<b>Room TBC</b>	"I'M NOT NAUGHTY!" Supporting children with ODD and PDA Karen Ferguson	Behaviour Change – Winning Hearts and Minds for Consistent Practices Ollie Frith	Building a Culture of Oracy in the Classroom Tim Perris	Reading & Writing For Life Hywel Roberts and Martin Illingworth	Embedding Regular Testing into the Curriculum: Challenges & Solutions Dr Katy Burgess
<b>Room TBC</b>	The Power of Collaboration Alison Kriel	Digital Tools to Enhance Teaching & Learning Across the Curriculum Nick Evans	Working with Disruptive, Defiant & Disrespectful Pupils Nicola S. Morgan	Values as an Organisational Compass Julie Rees	MINDSET! What is it? How do I improve it? What happens if I lose it? Ross McWilliam
<b>Room TBC</b>	Using Vibrant Quality Circle Times to Promote Child Wellbeing in Positive Calm Classrooms Jenny Mosley	Developing Inclusive Communication Through Brick Play Niki Jones	Giving Teachers a Voice Alison Kriel	The Importance of Play & Playgrounds for all Children Jenny Mosley	Rethinking Wellbeing in Education Kelly Hannaghan
<b>Room TBC</b>	Using CBT to Make Positive Behaviour Changes Sam Garner	Effective Parental Communication: Improving Pupil/Student Attendance & Behaviour Nicola S. Morgan	The New Curriculum Top time saving tips for the busy SENCo/ALNCo Ginny Bootman	The Art of Argument Will Ord	I Hurt Inside; Making the Unconscious Conscious Joy Dando
<b>Room TBC</b>	'Voices of Wellbeing' - The Six Circles of Mental and Emotional Wellbeing Nina Jackson & Kelly Hannaghan	'The Gift of Giving' for pupil wellbeing, ALN and SEMH Nina Jackson	How can behaviour "be sensory"? And do sensory toys help or hinder us? Joanne Grace	Maths – Teach for Today's World Karen McGuigan	Engaging the Disengaged Calvin Eden
<b>Room TBC</b>	Using Drama and Storytelling: a reverie in Botheredness and C4W Hywel Roberts	The New Curriculum Prof Mick Waters	Talk for Reading Pie Corbett	Supporting TAs to Develop Metacognition Sara Alston	Just why "smart" goals set us up for mediocrity... AT BEST! David Hyner
<b>Room TBC</b>	A practical science seminar to inspire future scientists! Awen Haf Ashworth	What if some of your knowledge and understanding around mental health, well-being and performance was actually holding you back, or even hurting you? Ross McWilliam	The Fundamentals of Attachment in Practice: Supporting children/young people in school & college Karen Ferguson	Ensuring Behaviour Sanctions Don't Compound Mental Health Issues Sam Garner	The Holy Grail – Is it what we really need? Dr Helen Jones
<b>Room TBC</b>	Dinasyddion y Dyfodol Megan Rhys Williams	Seminar Gwyddoniaeth ymarferol i Sbarduno gwyddonwyr y dyfodol! Awen Haf Ashworth	Cefnogi'r Gweithlu Addysg i Ddysgu Cymraeg Donna Lewis	Cadw a chynnal athrawon o fewn y proffesiwn - beth sydd angen ei feithrin mewn darpar athrawon? Rhian Tomos	Prosiect RILL (Rhaglen Iaith a Llythrennedd) - Cwrs 15 wythnos am ddim i ysgolion cynradd Cymru a Lloegr. Geran Hughes
<b>Outside</b>		Health and Wellbeing Outdoors - effective ways of engaging pupils Meriel Jones	Health and Wellbeing Outdoors - effective ways of engaging pupils Meriel Jones	Health and Wellbeing Outdoors - effective ways of engaging pupils Meriel Jones	

**Prices per seminar: £10.00 + VAT - Early bird rate (until 2nd June) | £15.00 + VAT Standard rate | £20.00 + VAT - Price on the day |**

**50% off for group 10+ (until 2nd June 2023)**

Invoice Information: (if the details below are the same for all staff members, you will only need to complete below only once)

Contact Name: \_\_\_\_\_ Email address: \_\_\_\_\_

Address: \_\_\_\_\_ Contact Number: \_\_\_\_\_

Post Code: \_\_\_\_\_ Purchase Order: \_\_\_\_\_



We inspire education staff to become



# Everyday Superheroes

NSM Training and Consultancy offers immersive, practical and high-quality CPD courses and in-house training sessions for education staff across the UK and beyond.



**NSM** Training & Consultancy

[www.nsmtc.co.uk](http://www.nsmtc.co.uk)

*"Fantastic, passionate and relatable  
key speakers - could have listened to each  
one all day long.*

*A wonderful pack provided beforehand and I  
was really touched by the wonderful treat and  
lunch voucher - very thoughtful and much  
appreciated.*

*A thoroughly enjoyable, informative and  
relevant day - many thanks to you all.  
More please - walking away inspired,  
constructively reflective  
and content"*

**We provide a wide variety of courses  
and conference delivered live online  
or face-to-face:**

- ✦ Positive Behaviour Management & Improving Attendance
- ✦ Engaging Parents & Families
- ✦ Mental Health & Wellbeing
- ✦ ALN/SEND
- ✦ Effective Leadership, Business & Site Management

 [bookings@nsmtc.co.uk](mailto:bookings@nsmtc.co.uk)

 01766 549725

## TERMAU AC AMODAU / TERMS & CONDITIONS

1. This booking form is issued to confirm your place on the seminar(s) at the National Education Show (live online or face to face).
  2. Full payment must be made within 28 days of you registering by submitting this form. If payment is not made prior to the show date, the National Education Show ("NES") reserves the right to refuse entry to you/the delegate. Once payment has been received a receipt will be sent.
  3. The show details are correct at time of publication but the National Education Show reserves the right to alter the date, time, venue, trainer and/or show without prior notice due to any unforeseen circumstances.
  4. National Education Show reserves the right to cancel any advertised seminars if deemed necessary by NES, at its sole discretion.
  5. Please note that venue and/or online platforms are subject to change. On the unusual occasion where a venue and/or online platform change is necessary, NES will provide a venue within the same vicinity and/or an alternative online platform. Please read your joining instructions carefully to see the final and correct venue directions and/or online platform.
  6. While it is the intention of the NES to provide (for face-to-face show) you/delegate with a physical venue to deliver the show, NES reserves the right, at its sole discretion, to alter the method of delivering the show (including, but not limited to, delivering the exhibition & seminars online).
  7. For physical venues we regret that any expenses incurred, cannot be reimbursed. We strongly advise you to wait for your joining instructions before making travel/accommodation arrangements or to email our office on [info@nationaleducationshow.com](mailto:info@nationaleducationshow.com) to check final details.
  8. Please note it is your/delegate responsibility to ensure the delegate's email address on the booking form is correct for ticketing purposes. If you haven't heard from us, please email [info@nationaleducationshow.com](mailto:info@nationaleducationshow.com) at least 3 weeks before the show date.
  9. This contract is valid with or without a purchase order number.
  10. Please note that the NES accepts no responsibility or liability for any accidents or losses that occur at show venues and/or where the live online courses is accessed from.
  11. Cancellation Policy: By completing and returning this booking form you and/or your school/organisation agree to pay the NES the fees specified.
  12. For non-attendance on the 'free seminar scheme' where there is a charge for seminars the Customer will be invoice the fee outlined in the booking form.
  13. You may substitute delegates on a seminar you have booked, free of charge at any time.
  14. Cancellation fees for training/consultancy are as follows:  
Notice Provided Cancellation Fees.  
More than 28 days: No Charge  
14 – 28 days: 50% of original fee  
Less than 14 days: 100% of original fees
  15. Once we have received your completed booking form, we will send you a confirmation email and invoice. If you have any questions or queries, please email [info@nationaleducationshow.com](mailto:info@nationaleducationshow.com) or phone 01766 772927.
  16. The contract between us, which is the subject of these Terms and Conditions, shall be governed by and construed in accordance with English law (including in relation to non-contractual disputes or claims) and we both agree to submit to the exclusive jurisdiction of the English Courts (including in relation to non-contractual disputes or claims).
  17. No person who is not a party to this contract between us, shall have any rights to enforce its terms and conditions.
  18. The National Education Show Ltd shall not be liable to the Customer for any delay or failure to perform NES Ltd's obligations under the Contract, if the failure is due to any cause beyond NES reasonable control (including, but not limited to, strikes, lock-outs or other industrial dispute, failure of a utility service or transport network, act of God, war, riot, civil commotion, malicious damage, shutdown due to pandemic (whether due to a new or a reoccurrence of a pandemic), compliance with any law or governmental order, rule, regulation or direction, accident, breakdown of plant or machinery, fire, flood, storm or default of suppliers or subcontractors). NES shall not be liable for any loss (whether direct or indirect) suffered by the Customer (except in respect of death or personal injury caused by NES negligence) including loss of profits arising out of performance of the Contract by NES (or its servants or agents).
  19. Data protection: By entering your details in the fields above, you agree to allow NES to contact you by mail, email, telephone. Should you not wish us to contact you, please let us know using the address above.
  20. We hope that you are completely happy with our service, but if something does go wrong, we would like to know about it so that we can put things right and ensure that it does not happen again.
  21. We will process your personal data in accordance with our privacy statement a copy of which is available on our website [www.nationaleducationshow.com](http://www.nationaleducationshow.com)
  22. Notice: we will send you promotional material in accordance with the terms of our privacy statement which is available on our website at [www.nationaleducationshow.com](http://www.nationaleducationshow.com). We will update you via email (no more than twice a week) regarding NES's future shows, speakers, partners and exhibitors, courses. You can unsubscribe from our future emails at any time by clicking the unsubscribe button on one of our emails.
- Thank you for booking with the National Education Show Ltd

*If you have any special requirements, please note on your booking form.*

*Oes gan unrhyw un o'ch staff / cynrychiolwyr unrhyw ofynion arbennig neu anghenion dysgu ychwanegol y dylem fod yn ymwybodol ohonynt, nodwch ar y ffurflen archebu.*