

The National
EDUCATION
Show

JUNE
13th
2025

Llandudno
Venue Cymru

Incorporating the **ALN / SEND Show**

Show Guide



Visit our website!

**50%
OFF**

for group bookings of
10+ delegates
until 25th April 2025

@NationalEdShow
#NESLLANDUDNO2025

Working with:



Are you looking to **Inspire, Support** and **Develop Great Learners?**

Simple steps to make your **National Education Show** experience **enjoyable, informative** and **beneficial**.



STEP 1:

Share the brochure with all relevant staff.



STEP 2:

Advise staff on the options for seminars - linking this to the SDP.



STEP 3:

Scan QR code for online booking or photocopy form on page 20.



STEP 4:

Collect and send all the seminar forms to the NES email or office.



STEP 5:

Print off the general entry pass and bring to the show.



STEP 6:

The day has arrived! Enjoy your time at NES Llandudno on 13th June 2025



STEP 7:

Hold a staff meeting to share the key points and develop implementation of new knowledge and ideas.

“

I am writing with the sincerest of thanks for putting on such a fantastic event on Friday. The feedback from staff has been overwhelmingly positive and has proven to be a powerful mode of professional learning for a variety of roles and responsibilities across the school. The speakers were knowledgeable and engaging and the stalls were informative and appropriately pitched for supporting schools.

”



Don't forget to add the date to your calendar!

Can't make the Llandudno show?

Don't worry, we are returning to **Cardiff** on **3rd October 2025!**

“

We had a really positive experience attending all seminars and the Exhibition Hall. I hadn't anticipated how much my staff would get out of the stalls, but they did! From my experience, both the booking and regular email communication was efficient and helpful and we appreciated the early bird discount. The biggest draw for us as a school is that we can book individual workshops - this made it bespoke and useful to link up to our SIP.

”

Check out what happened at Llandudno 2024



About NES Llandudno 2025

Welcome



We would like to welcome you to the National Education Show Llandudno.

This will be our third year in Llandudno, hosting Wales' biggest education show. The show is all about celebrating education and teaching by bringing together thousands of educational professionals to network, experience the exciting exhibition and seminars.

The show will be full of innovative ideas and solutions, as well as engaging accredited CPD seminars which will be bursting with the latest research, practical strategies and ideas to inspire and empower staff, children and young people. Additionally, we also have a selection of seminars available in Welsh.

We can't wait to see you on Friday 13th June 2025 at the spectacular Venue Cymru.



Einir A Williams
Director



Show Date & Times

Friday 13th June 2025 | 08.00 - 16.00

VENUE:

Venue Cymru, Promenade, Llandudno, LL30 1BB

FOOD:

Food and drink will be available to purchase from the Venue Cymru Café located in the Main Arena.

WI-FI:

Venue Cymru offer a free of charge public Wi-Fi facility for delegates and patrons using the complex. This can be accessed by selecting - Venue Cymru Free Wireless.

TRAVEL & PARKING:

The venue is just a five-minute walk from Llandudno Train Station. Venue Cymru is 4 miles away from the A55 and takes approximately 8 minutes by car, giving access from all over the North West and beyond via M62/M56. From Junction 19 of the A55, follow signs for Llandudno and take the A470 (Royal Welsh Way), from there follow the brown road signs marked Venue Cymru. Venue Cymru operates a Pay and Display car park at the rear of the building, with designated disabled parking bays to the left of the main entrance. Parking is also available on the Promenade which is also Pay and Display until 4pm, to which then it is free of charge.

SEATING:

There are seating areas in the café and Antrim areas.

PRAYER ROOM:

A prayer room is also available to use on the day - if required please ask a member of staff to direct you there.

PHOTOGRAPHY:

PLEASE NOTE THAT THIS EVENT IS BEING FILMED AND PHOTOGRAPHED.

Please read our Admissions Policy here:

<http://nationaleducationshow.com/admissions-policy/>

Working with:



Agored Cymru is a Welsh awarding body, leading education in Wales, for Wales. We engage with schools so they can have the very best qualifications and services, meeting the needs of the new Curriculum for Wales and beyond.

www.agored.cymru



NSM Training & Consultancy

NSM Training and Consultancy offers immersive, practical and high-quality CPD courses and in-house training sessions for education staff across the UK and beyond.

www.nsmc.co.uk



PRIFYSGOL
BANGOR
UNIVERSITY

The School of Educational Sciences has an established reputation in the fields of teacher training, professional development and leadership.

www.bangor.ac.uk



NAHT is the largest union and professional association for senior and middle leaders in education. We are solution driven and add value to support and protect your role. Join today.

www.naht.org.uk



The Books Council of Wales is a national charity that supports the publishing industry in Wales. An important element of our work is promoting literacy and reading for pleasure. We do this by ensuring a regular supply of publications and co-ordinating schemes and special events that celebrate reading in a fun and attainable for all.

www.books.wales

Contents

About NES	4
Seminar Timetable	7
Seminars & Speakers	8-16
Booking Form	20



Spread the word!

Don't forget to include the following, when talking about us on social media!

#NESLLANDUDNO2025
@NationalEdShow

01766 496830
info@nationaleducationshow.com
www.nationaleducationshow.com

@NationalEdShow

/NationalEducationShow

@NationalEdShow



Reforming for the Future

We are excited to be shaping the *New* National 14-16 Qualifications alongside QUALIFICATIONS WALES to develop accreditation that is fit for delivery from September 2027. Our commitment, position and expertise means we will be offering:

Skills for Life Foundation qualifications

VCSEs Skills suite with Skills for Work

Personal Project qualifications

Scan the code to see how you can help shape the future of education in Wales...



We will continue to provide support to all schools throughout the reform journey!

Why offer Agored Cymru qualifications?

Fully committed to NCfW GCSE Equivalencies

Already aligned to curriculum's four purposes

Evidence based formative assessments - no exams!

Capped 9, performance points included

Continue to deliver our current offer into 2027 giving you time to transfer to the new!

Consult with teaching and industry experts, colleges and educational institutions when developing our qualifications

Did you know?!

Our current suite of qualifications are ideal stepping stones towards an apprenticeship. We offer 55 qualifications that meet the requirements of 30 apprenticeship frameworks.

Contact our Business Development team to discuss how our qualifications will benefit your school and your learners!



businessdevelopment@agored.cymru
agored.cymru | 02920 747866

Seminar Timetable

All seminars accredited by



9:00 - 9:50

10:30 - 11:20

12:00 - 12:50

13:30 - 14:20

15:00 - 15:50

Room TBC	Using Vibrant Quality Circle Times to Promote Child Wellbeing in Positive, Calm Classrooms Jenny Mosley	The Importance of Play and Playgrounds for All Children Jenny Mosley	Connect Then Correct: Trauma, Attachment and ACEs from an Adult's Point of View Krissi Carter	Oracy - Pedagogy of Hope and Action Hywel Roberts	Unlock your strengths - make life easier & more fun! Frederika Roberts
Room TBC	Teaching and Learning in a Neurodiverse World Nina Jackson	Finding the Fizz - Pedagogy, Practice, Emotional Well-being, Hope and Happiness Nina Jackson	How to bring joy into your classroom without losing your mind Hywel Roberts	The Explosive Pupil! Anger Management for Schools and Colleges Nicola S. Morgan	Support your students to succeed in the workplace and beyond Cait Lees
Room TBC	Making The Most Of The Internet As A Teacher Mr P	Working Smarter Not Harder: Embracing AI to support teaching and learning in the classroom Mr P	Be Resilient! Practical ways to Develop Resilient Pupils Nicola S. Morgan	Bullying is so gay Ian Timbrell	Autistic Young Experts: the importance of centering lived experience Dr Sarah Broadhurst and Dr Morwenna Wagstaff
Room TBC	Supporting children and young people with ADHD in school- the principal overarching strategies Colin Foley	Understanding and Supporting ADHD Colin Foley	Shape your World by Finding your Voice Catherine Sandland	Supporting your students to communicate effectively Cait Lees	Senior Mental Health Lead: Leading the Way with Impactful Whole School Wellbeing Kelly Hannaghan
Room TBC	Coaching at heart of Organisational health and well-being Julie Rees	Staff morale: Are your staff really motivated? Peter Agnew	To Pride or Not to Pride Ian Timbrell	Resilience 2.0: Embracing Challenge & Change Will Hussey	The Impact of Forest School on children with autism Rachel Macdonald
Room TBC	2025 vision: Confidence, engagement and noticefulness Martin Illingworth	Where Words Fall Music Speaks Joy Dando	Promoting Staff Wellbeing in Education Nicola Harvey	Difference, not deficit: the AET's approach to Good Autism Practice Dr Sarah Broadhurst and Dr Morwenna Wagstaff	Some pupils press my buttons and leave me feeling desperate! Cat Williams
Room TBC	Wrexham AFC Primary Dragons: Sharing good practice Matt Hilliker	Transforming Education with Mental Fitness Krissi Carter	(Re-)discover your joy! Frederika Roberts	Interactive STEM for cross-curriculum topics Jennifer Hough	Engaging parents in intervention Dr Margiad Williams and Dr Anwen Rhys Jones
Room TBC	Building Bridges: Strategies for Educators to Forge Positive Parental Partnerships Kelly Hannaghan	 GONGONEDDUS - Therapi Sain Leisa Mererid	 Mini Me Yoga Ynys Mon: Strategaethau ioga a lles i blant cynradd Cari Rowlands	 Hybu Llythrennedd - adnoddau am ddim Myrddin ap Dafydd, Elen a Delyth Medi	 Datblygu lles, gofa a chymorth yng nghyd-destun egwyddorion trochi Cari Haf
Room TBC	 Deall Dyslecsia mewn dysgwyr hyn Lowri Thomas a Mathew Williams	 Why Trauma-Informed Settings are Essential Dr. Coral Harper	 Creadigrwydd Digidol ar draws y Cwricwlwm Robin Williams	Emotionally-based school avoidance Karen Ferguson	How can Charanga Cymru support me and give me confidence to teach music in my classroom? Manon Llwyd & Madeleine Casson
Room TBC	Practical ideas for training colleagues new to middle leadership Peter Agnew	 Dilyn Diddordeb y Plentyn - cyn cam cynnydd 1 Kayleigh Bickford	Removing barriers to support behaviour for ALN / SEND pupils Karen Ferguson	7 common school leadership problems and how to fix them Sonia Gill	Magic commands the attention of children Karen Hughes
Outside Venue		Games Galore! Polly Snape & Carolyn Burkey	Games Galore! Polly Snape & Carolyn Burkey	Games Galore! Polly Snape & Carolyn Burkey	

All seminars accredited by



Seminars & Speakers

9.00-9.50

Using Vibrant Quality Circle Times to Promote Child Wellbeing in Positive, Calm Classrooms

Schools in Wales reported that children's reading and writing skills had regressed post-Covid. Literacy skills, conversational confidence, turn-taking, tolerance and reading non-verbal cues had been impacted by lockdowns and closures. Encouraging children to converse through vibrant, proactive Circle Times promotes communication skills and expression, aiming to promote wellbeing using this safe forum and other strategies.



Presented by:

Jenny Mosley
Company Director and Founder of Quality Circle Time plus Publisher

Language: **English** | Audience: **All inc. ALN/SEND**

9.00-9.50

Teaching and Learning in a Neurodiverse World

Neurodiversity is an inclusive term that acknowledges the fact that people with learning difficulties have a unique experience of the world that can bring many benefits. They may struggle in some areas but excel in others. The diversity of human thinking should be celebrated! During this session, Nina Jackson, a neurodiverse educator herself, will guide you, share strategies, skills and ideas to support teaching and learning in a neurodiverse world.



Presented by:

Nina Jackson
Education Consultant & Author

Language: **English** | Audience: **All inc. ALN/SEND**

SEND Seminar

9.00-9.50

Making The Most Of The Internet As A Teacher

In the session Mr P will share and demonstrate a wealth of free tools available for teachers to use to enhance learning in the classroom.



Presented by:

Mr P
Primary School Teacher and Education Consultant

Language: **English** | Audience: **All**

9.00-9.50

Supporting children and young people with ADHD in school- the principal overarching strategies

The session will explore the principal strategies of engagement, movement, supporting Working Memory and Variable attention and how we can support these in classroom settings to achieve good outcomes for learners with ADHD. The session will link each strategy to the neuro cognitive profiles of ADHD, including gender.



Presented by:

Colin Foley
National Director of Training

Language: **English** | Audience: **All inc. ALN/SEND**

SEND Seminar

9.00-9.50

Coaching at heart of Organisational health and well-being

Developing a coaching culture will have the most positive impact on people working in schools and ultimately the children and their families. Coaching leaders and developing coaching in schools is a powerful way to equip people with the autonomy they need to shape the educational landscape where they work. In this interactive workshop, Julie will engage you in the art of coaching. There will be a focus on listening, curiosity and asking the right questions.



Presented by:

Julie Rees
RLE Consultant, CCPC Co-active coach and C-me Accredited Consultant

Language: **English** | Audience: **All**

9.00-9.50

2025 vision: Confidence, engagement and noticefulness

The young need to network, to communicate effectively, and be alert to the world around them. Being confident is at the heart of this. How can we create the learning opportunities and spaces for our young to develop their sense of interest and capacity in learning? In this session, with a mix of practical ideas and deep thinking, 'Forget School' author Martin Illingworth provides an insight into the ways that teachers can become more focused upon supporting young people to see the beauty of their lives now and their potential in entering the rapidly changing world of the twenty-first century.



Presented by:

Martin Illingworth
Senior Lecturer in Education at Sheffield Hallam University, Consultant Teacher

Language: **English** | Audience: **All**

Seminars & Speakers

9.00-9.50

Wrexham AFC Primary Dragons: Sharing good practice

Wrexham AFC Football Trust have worked in partnership with Achieve More Training, Youth Sport Trust and Active Wrexham to use the recent global publicity to make a difference to the local communities of Wrexham through school engagement. Using the 'Place based approach' and 'Physical Literacy' informed practice to support schools school leaders, teachers and TA's with systems, policies and practices to improve health and wellbeing opportunities for children and young people.



Presented by:

Matt Hilliker
Director

Language: **English** | Audience: **EY, Pri**

9.00-9.50

Building Bridges: Strategies for Educators to Forge Positive Parental Partnerships

This session empowers educators and school leaders with strategies to enhance parental partnerships in education, promoting student success in line with national policies.



Presented by:

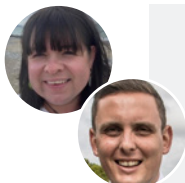
Kelly Hannaghan
Mental Health and Wellbeing Consultant at Mind Work Matters Ltd

Language: **English** | Audience: **All**

9.00-9.50

Deall Dyslecia mewn dysgwyr hŷn

Cyfle i roi eich hun yn 'sgidiau dysgwyr' â Dyslecia a chanolbwyntio ar arddulliau i hwyluso'r dysgu.



Presented by:

Lowri Thomas
Rheolwr Hyfforddiant ac Ansawdd
Mathew Williams
Tiwtor

Language: **Cymraeg** | Audience: **HE, FE & Adults**

9.00-9.50

Practical ideas for training colleagues new to middle leadership

Many teachers secure promotion to middle leadership positions due to their prowess in the classroom, rather than their experience and knowledge of leadership and management. This seminar seeks to outline what a good in-house leadership training programme should look like. Drawing from a range of recent publications on the art of leading from the middle, together with his experience as a headteacher in developing leaders, the presenter will explore and outline the key elements that should make up such a programme.



Presented by:

Peter Agnew
Educational Consultant (Ex Head teacher of Darland High School 2009 -2019)

Language: **English** | Audience: **All inc. ALN/SEND**

10.30 - 11.20

The Importance of Play and Playgrounds for All Children

Reports show that some pupils are finding unstructured playground play and socialisation difficult post-Covid. Many schools are having huge problems in the playground. Play is crucial to children's wellbeing, resilience and ability to learn, with play laying the foundations for literacy, communication and spontaneity. Jenny will highlight key common issues that are found in playgrounds and ways of encouraging healthy, active play, good communication between supervisors and children and ideas that children can help to take responsibility for their behaviour and support the problem-solving process to finding solutions to playground issues.



Presented by:

Jenny Mosley
Company Director and Founder of Quality Circle Time plus Publisher

Language: **English** | Audience: **All inc. ALN/SEND**

10.30 - 11.20

Finding the Fizz - Pedagogy, Practice, Emotional Well-being, Hope and Happiness

In a world of ever changing educational policies and practices, it is the unique world of the child, growing, learning and experiencing the world with different learning experiences which counts. Data, tests and exams does not a great learner make. 'Of Teaching, Learning & Sherbet Lemons' is what education, schools, teaching and learning is all about. We need the solid exterior - the rigour, the rules, the systems and the structures - to make everything work. Getting through the hard shell makes going in search of the fizzy centre that much more satisfying, and it is here, at the core of teaching and learning, where the most magical things take place, where the real fizz happens. This is the part that really makes everything worthwhile - the chemical reaction that produces outstanding, innovative and motivational teaching and learning for everyone in and out of our classrooms, not just the few.



Presented by:

Nina Jackson
Education Consultant & Author

Language: **English** | Audience: **All**

All seminars accredited by



Seminars & Speakers

10.30 - 11.20

Working Smarter Not Harder: Embracing AI to support teaching and learning in the classroom

This session will involve Mr P sharing and demonstrating effective ways AI can help and support teachers in the classroom.



Presented by:

Mr P
Primary School Teacher and Education Consultant

Language: **English** | Audience: **All**

10.30 - 11.20

Understanding and Supporting ADHD

Given the significant increase in the diagnosis of ADHD, the session will explore this dual diagnosis and the impact this can have on children and young people in schools. The session will explore the principal strategies to support children and young people with this dual diagnosis.

SEND Seminar



Presented by:

Colin Foley
National Director of Training

Language: **English** | Audience: **All inc. ALN/SEND**

10.30 - 11.20

Staff morale: Are your staff really motivated?

With record numbers of teachers leaving the profession early and many schools experiencing a crisis in recruitment, it is timely to reflect on methods school leaders can employ to motivate staff. This seminar will interrogate a number of motivational theories to seek out strategies that we can use in schools to create and sustain motivation among staff. Along the way, we will examine the role that organizational culture plays in motivation, together with ways to achieve staff ownership of improvement planning.



Presented by:

Peter Agnew
Educational Consultant (Ex Head teacher of Darland High School 2009 -2019)

Language: **English** | Audience: **All inc. ALN/SEND**

10.30 - 11.20

Where Words Fail Music Speaks

Music therapy is a tool that can support children with mental health difficulties through expressing emotions through music or other creative activities where words lack or feel too difficult. Through music therapy, children can start to give meaning to their thoughts, feelings and emotions to create connection, relieve anxiety, regulate emotions and improve relationships.

SEND Seminar



Presented by:

Joy Dando *BEd Hons, NPQH, MA Music Therapy*
Music Therapist

Language: **English** | Audience: **All inc. ALN/SEND**

10.30 - 11.20

Transforming Education with Mental Fitness

Mental fitness is our secret weapon for bouncing back from tough situations. Just like physical fitness, you can train your mind to see challenges as opportunities and gifts. In this high-energy session, you'll learn practical techniques to rewire your brain for positivity and resilience. Get ready to crush those inner critics holding you back! You'll even take free assessments to discover your own current mental fitness score and pinpoint what's keeping you from your full potential. Walk away empowered and ready to tackle anything life throws at you! The strategies in this session are suitable for staff, older primary school children, secondary school students and FE.



Presented by:

Krissi Carter
Peak Performance Coach and Ex Secondary School Headteacher

Language: **English** | Audience: **All**

10.30 - 11.20

GONGONEDDUS - Therapi Sain

Trochfa Sain / Gong bath

Dewch i ymuno a Leisa Mererid am sesiwn ymlaciol yng nghwmni'r gongs.

Dewch a mat, blanced a chlustog gyda chi i greu nyth clyd!



Presented by:

Leisa Mererid
Awdures ac Actores

Language: **Cymraeg** | Audience: **All**

Seminars & Speakers

10.30 - 11.20

Why Trauma-Informed Settings are Essential

SEND Seminar

The aim of the session is to offer an understanding of the impact caused by Adverse Childhood Experiences and the resultant impact on pupils' learning and progress.

- Effects of trauma on life and learning
- What cutting-edge brain science and psychological research can tell us
- The traumatised child: Healing brain, mind and body.
- Relational stress and relational poverty: The long-term impact on the child's mind and brain and interventions that work



Presented by:

Dr. Coral Harper
Director of Trauma Informed Schools Wales

Language: **English** | Audience: **All inc. ALN/SEND**

10.30 - 11.20

Dilyn Diddordeb y Plentyn - cyn cam cynnydd 1

Sut mae lleoliadau blynyddoedd cynnar yn

- Rhoi'r plentyn yn y canol a defnyddio eu diddordebau i gefnogi eu datblygiad
- Rhoi profiadau dilys a phwrpasol i blant bach
- Sut all ysgolion ddefnyddio'r profiadau i gefnogi plant meithrin
- Rhannu arferion da a syniadau



Presented by:

Kayleigh Bickford
Mudiad Meithrin

Language: **Cymraeg** | Audience: **Nursery, Pri**

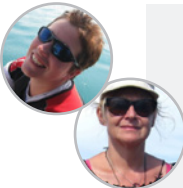
10.30 - 11.20 - **Outside**

(repeated at 12:00-12:50 & 13:30-14:20)

Games Galore!

Anyone who's been on one of our training courses will know that we think learning is at its best when it's fun, and that we like to teach as much as possible through games.

Our workshop will guide you through adapting some of our simple outdoor games to cover any number of themes and Areas of Learning and Experience.



Presented by:

Polly Snape & Carolyn Burkey
North Wales Outdoor Learning

Language: **English** | Audience: **Pri**

12.00 - 12.50

Connect Then Correct: Trauma, Attachment and ACEs from an Adult's Point of View

Unlock the power to transform your school in this dynamic seminar on trauma, attachment, and adverse childhood experiences (ACEs).

This interactive session will change the way you lead and teach, revealing the profound impact of trauma, attachment and ACEs on student behavior and learning.



Presented by:

Krissi Carter
Peak Performance Coach and Ex Secondary School Headteacher

Language: **English** | Audience: **All**

12.00 - 12.50

How to bring joy into your classroom without losing your mind

Drawing on current research, Hywel will share approaches that will enable you to excel in your role. He will cover:

- How joy can become a central part of your day
- What the research tells us
- Employing discerning pedagogical decisions
- Powerful Botheredness models as a boon to creative practice and placing learning into contexts that bring the abstract to life
- Building the bridge between published and lived curriculum
- How our teacher persona and stance impacts learning and progress



Presented by:

Hywel Roberts
Education Consultant & Author

Language: **English** | Audience: **All**

12.00 - 12.50

Be Resilient! Practical ways to Develop Resilient Pupils

Developing resilience is now being seen as just as important as academic learning and wellbeing. According to research resilient children and young people achieve higher attendance, more positive behaviour, and achieve greater academic outcomes. This session is designed for participants to gain a deeper understanding as well as explore a kit bag of research-based practical approaches and strategies to support building resilience.



Presented by:

Nicola S. Morgan
Education Consultant, Author & TEDx Speaker

Language: **English** | Audience: **All**

All seminars accredited by



Seminars & Speakers

12.00 - 12.50

Shape your World by Finding your Voice

In a world where education is busy, noisy, conflicted and in crisis, it is more important than ever for us to use our voice and to do that with confidence and clarity and in the full expectation that we will be heard.

When we use our voice, we have the capacity to shape the world around us, whether that is in the classroom, conversation with a parent or at a conference.

Not using it means that we are at the whim of the others. Potentially we fail our future generation and the profession of teachers.

Learn how to develop a powerful, listened-to voice.



Presented by:

Catherine Sandland
Founder and Speaker Coach

Language: **Cymraeg** | Audience: **All**

12.00 - 12.50

To Pride or Not to Pride

In the last few years, holding a pride event has become a new trend in schools. Are these valuable additions to school or a gimmick? In this session, we will unpick the reasons for and against holding a pride in school, whether you should have a Pride club and alternative ways to engage with our community about LGBTQ+ identities and issues.



Presented by:

Ian Timbrell
RSE and LGBT+ Inclusion Trainer and Consultant

Language: **English** | Audience: **All**

12.00 - 12.50

Promoting Staff Wellbeing in Education

Join Nicola Harvey for an informative session focused on the importance of mental health and wellbeing for school staff. With mental health in schools at a crisis point, a whole school approach to wellbeing is essential, and this begins with the staff. In this session, Nicola will explore psychological safety, practical strategies to support emotional health, and a positive psychology model to stabilise and enhance mental wellbeing in the classroom and beyond.



Presented by:

Nicola Harvey
Harvey Heals Wellbeing & Training Consultancy

Language: **English** | Audience: **All**

12.00 - 12.50

(Re-)discover your joy!

In this highly interactive seminar, you will be guided through carefully-crafted questions and activities in pairs & small groups to help you uncover:

- What gives you joy
- What you are proud of
- How you can incorporate more of what gives you joy and a sense of pride and achievement into your life, in- and outside of work.

This seminar is based on one of the key principles of Appreciative Inquiry (a strengths-based process used for organisation-wide improvements, and in one-to-one coaching): "What you focus on, grows".



Presented by:

Frederika Roberts *MAPP PGCE*
Specialist in Wellbeing in Education

Language: **English** | Audience: **All**

12.00 - 12.50

Mini Me Yoga Ynys Mon: Strategaethau ioga a lles i blant cynradd

Cyfle i ddysgu sut i rannu technegau iechyd meddwl a lles i blant ar lawr dosbarth mewn modd syml a hwyl i blant ac athrawon. Cewch ragflas o strategaethau fwyaf poblogaidd rhaglenni Mini Me Yoga a sut i'w haddasu ar gyfer phob oedran a gallu.



Presented by:

Cari Rowlands
Mini Me Yoga Ynys Mon

Language: **Cymraeg** | Audience: **Pri**

12.00 - 12.50

Creadigrwydd Digidol ar draws y Cwricwlwm

Mae cynnwys digidol yn cynnwys cynhyrchu testun, graffeg, sain, fideo ac unrhyw gyfuniad o'r rhain at amrywiaeth o ddi-benion. Felly, bydd hyn yn cynnwys amryfal weithgareddau ar draws sawl cyd-destun gwahanol. Dewis a dethol apiau a meddalwedd, sy'n addas i ofynion y dasg er mwyn cyflwyno'r gwaith i gynulleidfa ehangach o fewn y dosbarth, ysgol a thu hwnt. Mae meddwl cyfrifiadurol yn gyfuniad o ymholi gwyddonol, datrys problemau a sgiliau meddwl. Cyn i ddysgwyr allu defnyddio cyfrifiaduron i ddatrys problem, rhaid iddyn nhw yn gyntaf ddeall y problem a'r dulliau o'i datrys.



Presented by:

Robin Williams
Ymgynghorydd TGaCh a Ymarferwr Creadigol mewn Celf a Dylunio

Language: **Cymraeg** | Audience: **All**

Seminars & Speakers

12.00 - 12.50

Removing barriers to support behaviour for ALN / SEND pupils



This seminar will consider the barriers SEND / ALN pupils are facing in the classroom and around the school. We will look at basic strategies and approaches to remove these barriers and support positive behaviour for learning.



Presented by:

Karen Ferguson
Trainer NSM Training & Consultancy

Language: **English** | Audience: **All inc. ALN/SEND**

13.30 - 14.20

Oracy - Pedagogy of Hope and Action

Hywel will explore the following:

- Storytelling and learning; the research into how stories engage and motivate learners
- Embracing enactive practice through Drama pedagogy to aid understanding across the curriculum
- Encouraging great oracy across the curriculum spectrum
- Moving from engagement to investment in learning
- How to build towards transformational practice
- We'll also have a laugh!!



Presented by:

Hywel Roberts
Education Consultant & Author

Language: **English** | Audience: **All**

13.30 - 14.20

The Explosive Pupil! Anger Management for Schools and Colleges

This session is designed to give participants an insight into the characteristics and psychology of anger and explore and understand potential triggers. As well as tools, techniques and practical strategies to safely manage and deal with certain pupils/students and situations.



Presented by:

Nicola S. Morgan
Education Consultant, Author & TEDx Speaker

Language: **English** | Audience: **All**

13.30 - 14.20

Bullying is so gay

LGBTQ+ pupils are more than twice as likely to be bullied in schools and despite all of the work to improve equality, these statistics are not improving. In this seminar, we will look at the reasons that bullying takes place, the mistakes that are often made when attempting to tackle bullying and what you can do to reduce bullying, and improve the lives of all pupils.



Presented by:

Ian Timbrell
RSE and LGBT+ Inclusion Trainer and Consultant

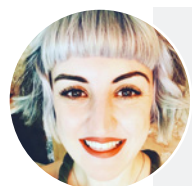
Language: **English** | Audience: **All**

13.30 - 14.20

Supporting your students to communicate effectively

A practical and interactive session for teachers and those working in early years and primary education in Wales. We will dive into the importance of learning vital oracy skills from early years and how to support your students to communicate effectively. This session will directly link to the Welsh curriculum and delve into the multifaceted intervention that is required to support oracy development in schools in Wales.

This session is designed to be fun and engaging for all attendees. Teachers will leave this session energised and inspired and will come away with strategies ready to implement within their classroom.



Presented by:

Cait Lees
Head of Education Operations

Language: **English** | Audience: **EY, Pri**

13.30 - 14.20

Resilience 2.0: Embracing Challenge & Change

Resilience 2.0 is about getting back to your classroom best. Sure, it's a bold statement, but on your day you're incredible. The truth? We need way more of those days. But that doesn't mean it's easy. School life is full-on. The things on the to-do list have surpassed 101. Of course, we're not human doings, we're human beings. Reminding ourselves of the sort of teacher we want to be is key to getting back to our best. It takes resilience and a sprinkling of brilliance. And then some... Based upon cutting edge research, this session is a personal upgrade designed to help you thrive no matter what.



Presented by:

Will Hussey
Author, Speaker & Educator

Language: **English** | Audience: **All**

All seminars accredited by



Seminars & Speakers

13.30 - 14.20

Difference, not deficit: the AET's approach to Good Autism Practice

SEND Seminar

This seminar will cover:

- How reframing from 'deficit' to 'difference' and embedding positive attitudes can help you better support autistic pupils
- The importance of positive attitudes and reducing stigma to create an inclusive setting
- Monmouthshire's experience of being an AET partner
- Videos and resources from the Monmouthshire Autistic Young Experts
- Overall, how improving understanding and acceptance of autistic pupils amongst peers and staff can improve wellbeing for all



Presented by:
Dr Sarah Broadhurst
CEO of Autism Education Trust
Dr Morwenna Wagstaff
Head of Inclusion at Monmouthshire Council
 Language: **English** | Audience: **All inc. ALN/SEND**

13.30 - 14.20

Interactive STEM for cross-curriculum topics

At Xplore! we are passionate about inspiring others to engage with STEM whilst recognising that it's not within everyone's comfort zone. This hands-on session will give you the opportunity to learn about incorporating STEM activities within a wider topic and making it truly cross-curricula.

As a practical session you will get to have a go at some simple experiments that can be linked to multiple areas of learning and experience. The session will provide insight and tools into how STEM can be used to engage learners with broader topics and big questions.



Presented by:
Jennifer Hough
Education Officer
 Language: **English** | Audience: **Pri, Sec**

13.30 - 14.20

Hybu Llythrennedd - adnoddau am ddim

Mae llythrennedd plant Cymru wedi dirywio'n arw yn ystod y ganrif hon - rydan ni 3 blynedd gyfan ar ei hôl hi wrth gymharu gyda lefel llythrennedd plant 10 oed Iwerddon erbyn hyn. Ond o ddysgu oddi wrth wledydd eraill, mae modd inni daclo'r broblem yma. Mae arolwg mewn 30 o wledydd yn dangos fod dysgu ar bapur - drwy ddarllen ac ysgrifennu - yn 60% yn fwy effeithiol na cheisio dysgu darllen ar sgrin. Mae Gwasg Carreg Gwalch yn cyhoeddi straeon a nofelau deniadol a hwylus i ddarllenwyr dihyder. Mae gennym storfa o adnoddau addysgol a gweithgareddau hamdden (am ddim!) i gyd-fynd â'r cyhoeddiadau yma. Bydd Elen, Delyth a Myrddin yn cyflwyno'r cyfan yn y sesiwn hon.



Presented by:
Myrddin ap Dafydd, Elen a Delyth Medi
 Language: **Cymraeg** | Audience: **All**

13.30 - 14.20

Emotionally-based school avoidance

This seminar will look at the challenges for our pupils around emotions and wellbeing. Looking at how it can lead to school avoidance and some considerations and strategies to support them to engage.



Presented by:
Karen Ferguson
Trainer NSM Training & Consultancy
 Language: **English** | Audience: **All**

13.30 - 14.20

7 common school leadership problems and how to fix them

Sonia Gill has worked with schools for over a decade and some problems come up time and time again. They can all be fixed. Learn what common problems exist, and how you can fix them.



Presented by:
Sonia Gill
CEO, Heads Up
 Language: **English** | Audience: **EY, Pri**

15.00 - 15.50

Unlock your strengths - make life easier & more fun!

In this highly interactive seminar, you will be introduced to the VIA character strengths, and how working with strengths supports individual and whole school wellbeing and improves relationships inside and outside of work.

Through individual, group and pair activities, you will:

- Explore your own strengths
- Learn to strengths-spot in others
- Design ways to work with your signature strengths to make life at work and outside of work easier and more fun.



Presented by:
Frederika Roberts MAPP PGCE
Specialist in Wellbeing in Education
 Language: **English** | Audience: **All**

Seminars & Speakers

15.00 - 15.50

Support your students to succeed in the workplace and beyond

A practical and engaging session for educators looking to provide students with the key oracy skills needed to thrive in the classroom and beyond. This session will directly link to the four purposes of the Welsh curriculum and how to support students through those vital years in the secondary classroom.

We'll look at what employers value when hiring and why developing those soft skills is vital now more than ever. We will dive into the importance of oracy skills in the workplace and how to give your students the best chance at succeeding where it matters.



Presented by:

Cait Lees
Head of Education Operations

Language: **English** | Audience: **Sec, FE**

15.00 - 15.50

Autistic Young Experts: the importance of centering lived experience

SEND Seminar

This seminar will cover:

- The importance of centering pupil voice and lived experience in your schools of settings
- The power of language and how to shift from 'deficit' to 'difference' to embed positive attitudes
- Practical examples of how to work with your autistic and neurodivergent pupils to better understand their perspectives and priorities
- Examples from the Monmouthshire Autistic Young Experts on their work
- PDF handout on 'How to set up your own Autistic Young Experts panel'



Presented by:

Dr Sarah Broadhurst
CEO of Autism Education Trust
Dr Morwenna Wagstaff
Head of Inclusion at Monmouthshire Council
Language: **English** | Audience: **All inc. ALN/SEND**

15.00 - 15.50

Senior Mental Health Lead: Leading the Way with Impactful Whole School Wellbeing

This seminar is designed for Senior Mental Health Leads, offering essential strategies to foster a culture of whole-school wellbeing. Participants will explore effective leadership practices to integrate mental health support across all school operations, aligning with national policies and best practices.

Attendees will leave equipped with practical tools to lead impactful and sustainable mental health programs in their schools.



Presented by:

Kelly Hannaghan
Mental Health and Wellbeing Consultant at Mind Work Matters Ltd

Language: **English** | Audience: **All**

15.00 - 15.50

The Impact of Forest School on children with autism

SEND Seminar

This PhD research was conducted in two (10 place) resource provision units attached to mainstream primary schools in the NW England. Children with an official diagnosis of autism were allocated places by the LEA. Both schools had regular Forest School provision, which was delivered differently. Children in the unit, their parents/carers and unit staff and school SLT were interviewed about their Forest School experiences. The responses yielded a rich data set which formed several themes and dichotomies, proving that regular Forest School is impactful within school but the ripple effect is far reaching.



Presented by:

Rachel Macdonald
Outdoor Learning Advisory Teacher and Forest School Leader

Language: **English** | Audience: **All inc. ALN/SEND**

15.00 - 15.50

Some pupils press my buttons and leave me feeling desperate!

We know trauma can lie at the root of challenging behaviour and it can be hard to know how to help ourselves and others in the hardest of situations. Strengths psychology is game-changer when it comes to understanding ourselves at our best (and worst!) and being able to see and bring out the best in others.

This seminar is a practical step-by-step trauma-informed guide for those who want to feel more confident, self-aware and in control when dealing with challenging pupils or situations.



Presented by:

Cat Williams
Clinical Hypnotherapist, Psychotherapist, Rapid Transformational Therapist, Speaker, and Author

Language: **English** | Audience: **All inc. ALN/SEND**

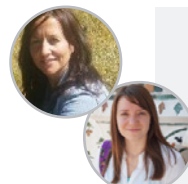
15.00 - 15.50

Engaging parents in intervention

Parental engagement in education can benefit child attainment, attendance, and children's motivation. Improving home-school links also helps address problems promptly and develop effective strategies to support the child's learning. Involved parents create a conducive learning environment at home and encourage and reinforce the importance of education which in turn contributes to the overall development of children, including emotional and social growth.

This session will;

- Discuss the challenges of engaging parents, ways to overcome them and the outcomes of doing so.
- Introduce an evidence-based interventions we evaluate and deliver which include parent components to improve home-school links.



Presented by:

Dr Margiad Williams
Lecturer in childhood and Youth Studies
Dr Anwen Rhys Jones
Research Officer

Language: **English** | Audience: **All inc. ALN/SEND**

Seminars & Speakers

15.00 - 15.50

Datblygu lles, gofal a chymorth yng nghyd-destun egwyddorion trochi

Strategaethau a dulliau trochi i datblygu medrau llafar yng nghyd-destun llesiant. Pwysigrwydd creu diwylliant priodol i blant gaffael iaith.



Presented by:

Cari Haf
Addysg Drochi Gwynedd

Language: **Cymraeg** | Audience: **Pawb**

15.00 - 15.50

How can Charanga Cymru support me and give me confidence to teach music in my classroom?

Charanga Cymru's digital platform - available for free to all teachers - is a flexible medium suitable for teachers, whatever their musical experience. Experience how this key resource can support and inspire you and your pupils to enjoy learning music in class.



Presented by:

Manon Llwyd & Madeleine Casson
Charanga Cymru

Language: **Cymraeg** | Audience: **Pawb**

Seminars Tickets

If you would like to attend any of our seminars at The National Education Show 2025, make sure you book today!

Early Bird Price:

£10
+VAT

Available until midnight
24th April 2025

Pre-show Price:

£15
+VAT

Available until midnight
10th June 2025

On the Day Price:

£20
+VAT

Available on the day
13th June 2025

To buy your ticket, visit: www.NationalEducationShow.com

Limited seminar tickets can be booked on the day.

No card machine is available to buy tickets on the day.

15.00 - 15.50

Magic commands the attention of children

An opportunity for you to be amazed by some magic tricks and to experience it's worth as it's used to develop self confidence and strategies to cope with difficult emotions.

As an arts in health practitioner, the well-being and mental health of children is of utmost importance to me. Combining this with over 40 years of performing as a magician means that the magic sessions I offer to promote children's self-confidence are in a safe environment, dynamic, entertaining, sensitive and with belly laughs of fun. The children feel valued and realise that they can make a difference, that their voice matters. Although we can't always make everything ok, we can make things better.

Magic that puts a smile in your heart.



Presented by:

Karen Hughes
Actress and Director

Language: **English** | Audience: **All**



Returning to Cardiff
in 2025!

3rd October 2025

Utilita Arena, Cardiff



**Don't forget to add the
date to your calendar!**



Check our website for further information:
www.nationaleducationshow.com

WE INSPIRE EDUCATION STAFF TO BECOME
EVERYDAY
SUPERHEROES



HOW CAN WE HELP YOU?



bookings@nsmtc.co.uk

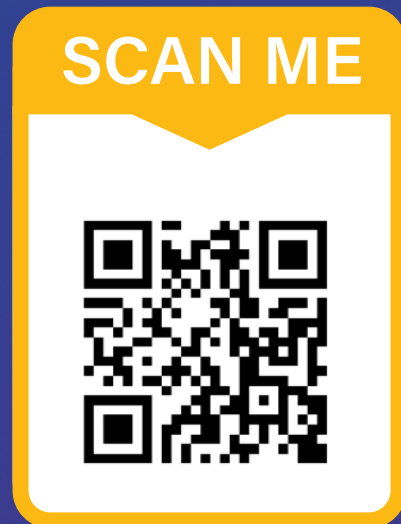


We keep it simple!

PRACTICAL LIVE ONLINE AND IN-HOUSE TRAINING, TAILORED TO YOU

Our bespoke live online and in-house training is designed to help you tackle your day-to-day challenges and professional development needs with practical strategies that actually make a difference. You and your staff are busy enough, so we do the hard work for you.

- ▶ **Behaviour Management**
- ▶ **Business & Site Management**
- ▶ **Effective Leadership**
- ▶ **Engaging Parents & Families**
- ▶ **Mental Health & Wellbeing**
- ▶ **Mindset & Resilience**
- ▶ **Outstanding Teaching & Assessment**
- ▶ **Pastoral Support**
- ▶ **Safeguarding & Child Protection**
- ▶ **School Attendance**
- ▶ **SENCo/ALNCo**
- ▶ **Teaching Assistants & Support Staff**



BESPOKE IN-HOUSE TRAINING PACKAGES

We come to you. Inspire your team with tailored training in the comfort of your school, college or organisation. We'll tackle your challenges together with personalised development solutions and hands-on strategies.



NSM Training &
Consultancy

PLEASE PHOTOCOPY A FORM FOR EACH MEMBER OF STAFF

June 13th 2025
Venue Cymru, Llandudno

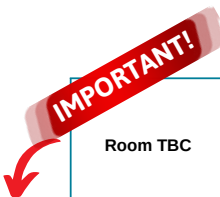
Delegate Name: _____ School / Organisation _____

Delegates email address _____ Job Title _____

(Please ensure your email address is individual so CPD hours can be awarded by Agored Cymru).

Please mark the table below with the seminars that you wish to attend.

SEND / ALN Seminars



IMPORTANT: PLEASE VISIT OUR WEBSITE FOR RECENT BOOKING FORMS AS THESE CHANGE DAILY!

	09:00 - 09:50	10:30 - 11:20	12:00 - 12:50	13:30 - 14:20	15:00 - 15:50
Room TBC	Using Vibrant Quality Circle Times to Promote Child Wellbeing in Positive, Calm Classrooms Jenny Mosley	The Importance of Play and Playgrounds for All Children Jenny Mosley	How to bring joy into your classroom without losing your mind. Hywel Roberts	Oracy – Pedagogy of Hope and Action Hywel Roberts	How can Charanga Cymru support me and give me confidence to teach music in my classroom? Manon Llwyd a Madeleine Casson
Room TBC	Teaching and Learning in a Neurodiverse World Nina Jackson	Finding the Fizz - Pedagogy, Practice, Emotional Well-being, Hope and Happiness. Nina Jackson	Be Resilient! Practical ways to Develop Resilient Pupils Nicola S. Morgan	The Explosive Pupil! Anger Management for Schools and Colleges Nicola S. Morgan	Senior Mental Health Lead: Leading the Way with Impactful Whole School Wellbeing Kelly Hannaghan
Room TBC	Making the most of the internet as a teacher Mr P (Lee Parkinson)	Working Smarter not harder Mr P (Lee Parkinson)	Shape your World by Finding your Voice Catherine Sandland	Emotionally-based school avoidance Karen Ferguson	The Impact of Forest School on children with autism Rachel Macdonald
Room TBC	Supporting children and young people with ADHD in school- the principal overarching strategies. Colin Foley	Where Words Fail Music Speaks Joy Dando	To Pride or Not to Pride Ian Timbrell	Bullying is so gay Ian Timbrell	Some pupils press my buttons and leave me feeling desperate! Cat Williams
Room TBC	Coaching at heart of Organisational health and well-being Julie Rees	Transforming Education with Mental Fitness Krissi Carter	Connect Then Correct: Trauma, Attachment and ACEs from an Adult's Point of View Krissi Carter	Supporting your students to communicate effectively Cait Lees	Support your students to succeed in the workplace and beyond Cait Lees
Room TBC	2025 vision: Confidence, engagement and noticefulness Martin Illingworth	Understanding and Supporting ADHD Colin Foley	Promoting Staff Wellbeing in Education Nicola Harvey	Resilience 2.0: Embracing Challenge & Change Will Hussey	Engaging parents in intervention Dr Margiad Williams Dr Anwen Rhys Jones
Room TBC	Wrexham AFC Primary Dragons: Sharing good practice Matt Hilliker	Why Trauma-Informed Settings are Essential Dr Coral Harper	Removing barriers to support behaviour for ALN / SEND pupils Karen Ferguson	Difference, not deficit: the AET's approach to Good Autism Practice Dr Sarah Broadhurst and Dr Morwenna Wagstaff	Autistic Young Experts: the importance of centering lived experience Dr Sarah Broadhurst and Dr Morwenna Wagstaff
Room TBC	Building Bridges: Strategies for Educators to Forge Positive Parental Partnerships Kelly Hannaghan	Staff morale: Are your staff really motivated? Peter Agnew	(Re-)discover your joy! Frederika Roberts	Interactive STEM for cross-curriculum topics. Jennifer Hough (Xplore)	Unlock your strengths – make life easier & more fun! Frederika Roberts
Room TBC	Deall Dyslecsia mewn dysgwyr hŷn. Lowri Thomas / Mathew Williams	GONGONEDDUS Therapi Sain Leisa Mererid	Mini Me Yoga Ynys Mon: Strategaethau ioga a lles i blant cynradd Cari Rowlands	Hybu Llythrennedd - Adnoddau am ddim Myrddin ap Dafydd, Elen a Delyth Medi	Datblygu lles, gofal a chymorth yng nghyd-destun egwyddorion trochi. Cari Haf
Room TBC	Practical ideas for training colleagues new to middle leadership Peter Agnew	Dilyn Diddordeb y plentyn – cyn cam cynnydd 1. Kayleigh Bickford	Creadigrwydd Digidol ar draws y Cwricwlwm Robin Williams	7 common school leadership problems and how to fix them Sonia Gill	Magic commands the attention of children. Karen Hughes
Outside		Games Galore! Carolyn Burkey, Polly Snape	Games Galore! Carolyn Burkey, Polly Snape	Games Galore! Carolyn Burkey, Polly Snape	

Prices per seminar: £10.00 + VAT - Early bird rate (until 25th April 2025) | £15.00 + VAT Standard rate | £20.00 + VAT - Price on the day | 50% off for group 10+ (until 25th April 2025)

Invoice Information: *(if the details below are the same for all staff members, you will only need to complete below only once)*

Contact Name: _____ Email address: _____

Address: _____ Contact Number: _____

Post Code: _____ Purchase Order: _____

IMPORTANT: NO CHANGES CAN BE MADE TO YOUR SEMINAR AFTER 3pm, Friday 6th June 2025

TERMAU AC AMODAU / TERMS & CONDITIONS

1. This booking form is issued to confirm your place on the seminar(s) at the National Education Show (live online or face to face).
2. Full payment must be made within 28 days of you registering by submitting this form. If payment is not made prior to the show date, the National Education Show ("NES") reserves the right to refuse entry to you/the delegate. Once payment has been received a receipt will be sent.
3. The show details are correct at time of publication but the National Education Show reserves the right to alter the date, time, venue, trainer and/or show without prior notice due to any unforeseen circumstances.
4. National Education Show reserves the right to cancel any advertised seminars if deemed necessary by NES, at its sole discretion.
5. Please note that venue and/or online platforms are subject to change. On the unusual occasion where a venue and/or online platform change is necessary, NES will provide a venue within the same vicinity and/or an alternative online platform. Please read your joining instructions carefully to see the final and correct venue directions and/or online platform.
6. While it is the intention of the NES to provide (for face-to-face show) you/delegate with a physical venue to deliver the show, NES reserves the right, at its sole discretion, to alter the method of delivering the show (including, but not limited to, delivering the exhibition & seminars online).
7. For physical venues we regret that any expenses incurred, cannot be reimbursed. We strongly advise you to wait for your joining instructions before making travel/accommodation arrangements or to email our office on info@nationaleducationshow.com to check final details.
8. Please note it is your/delegate responsibility to ensure the delegate's email address on the booking form is correct for ticketing purposes. If you haven't heard from us, please email info@nationaleducationshow.com at least 3 weeks before the show date.
9. This contract is valid with or without a purchase order number.
10. Please note that the NES accepts no responsibility or liability for any accidents or losses that occur at show venues and/or where the live online courses is accessed from.
11. Cancellation Policy: By completing and returning this booking form you and/or your school/organisation agree to pay the NES the fees specified.
12. For non-attendance on the 'free seminar scheme' where there is a charge for seminars the Customer will be invoice the fee outlined in the booking form.
13. You may substitute delegates on a seminar you have booked, free of charge at any time.
14. Cancellation fees for training/consultancy are as follows:

Notice Provided Cancellation Fees.

More than 28 days: No Charge

14 – 28 days: 50% of original fee

Less than 14 days: 100% of original fees

15. Once we have received your completed booking form, we will send you a confirmation email and invoice. If you have any questions or queries, please email info@nationaleducationshow.com or phone 01766 496830
16. The contract between us, which is the subject of these Terms and Conditions, shall be governed by and construed in accordance with English law (including in relation to non-contractual disputes or claims) and we both agree to submit to the exclusive jurisdiction of the English Courts (including in relation to non-contractual disputes or claims).
17. No person who is not a party to this contract between us, shall have any rights to enforce its terms and conditions.
18. The National Education Show Ltd shall not be liable to the Customer for any delay or failure to perform NES Ltd's obligations under the Contract, if the failure is due to any cause beyond NES reasonable control (including, but not limited to, strikes, lock-outs or other industrial dispute, failure of a utility service or transport network, act of God, war, riot, civil commotion, malicious damage, shutdown due to pandemic (whether due to a new or a reoccurrence of a pandemic), compliance with any law or governmental order, rule, regulation or direction, accident, breakdown of plant or machinery, fire, flood, storm or default of suppliers or subcontractors). NES shall not be liable for any loss (whether direct or indirect) suffered by the Customer (except in respect of death or personal injury caused by NES negligence) including loss of profits arising out of performance of the Contract by NES (or its servants or agents).
19. Data protection: By entering your details in the fields above, you agree to allow NES to contact you by mail, email, telephone. Should you not wish us to contact you, please let us know using the address above.
20. We hope that you are completely happy with our service, but if something does go wrong, we would like to know about it so that we can put things right and ensure that it does not happen again.
21. We will process your personal data in accordance with our privacy statement a copy of which is available on our website www.nationaleducationshow.com
22. Notice: we will send you promotional material in accordance with the terms of our privacy statement which is available on our website at www.nationaleducationshow.com. We will update you via email (no more than twice a week) regarding NES's future shows, speakers, partners and exhibitors, courses. You can unsubscribe from our future emails at any time by clicking the unsubscribe button on one of our emails.

Thank you for booking with the National Education Show Ltd

If you have any special requirements, please note on your booking form.

Oes gan unrhyw un o'ch staff / cynrychiolwyr unrhyw ofynion arbennig neu anghenion dysgu ychwanegol y dylem fod yn ymwybodol ohonynt, nodwch ar y ffurflen archebu.