



The National  
**EDUCATION**  
Show

Incorporating the ALN / SEND Show

# SHOW INFORMATION

16 | Venue  
MEH / JUNE | Cymru  
2023 | Llandudno

Follow us on Social Media!



#NESLlandudno2023



# ARRIVING AT VENUE CYMRU, LLANDUDNO



10 minutes from all major transport links. You can find us by searching our postcode LL30 1BB

Venue Cymru operates a Pay and Display car park at the rear of the building, with designated disabled parking bays to the left of the main entrance. Parking is also available on the Promenade which is also Pay and Display until 4pm, to which then it is free of charge.

## Venue Cymru Pay & Display Tariff

2 Hours - £1.70

4 Hours - £3.30

10 Hours - £6

24 Hours - £10.00

Blue badge holders must pay unless parked in a marked disabled bay.



You can pay for parking using cash, card or by using the PayByPhone parking app. If you use this app you must have an account and the car park number is 804457.

Gwybodaeth pellach am lefydd parcio yn Llandudno i'w gweld yma: <https://bit.ly/36CQ8n7>





Promenade Parking - Pay & Display  
Payable 10am - 4pm

Summer: 1 May - 30 September  
4 Hours - £3.70  
Over 4 Hours: £5.20

### Bus / Mini Bus / Taxi

If you are visiting the Show as a whole school, it is suggested that you come with a bus/minibus. This will save on parking costs and searching for parking spaces.

If you are arriving at the Venue by bus, cones will be placed in front of the hall for you to gain direct access to the hall.

YOU WILL NEED TO INFORM US VIA EMAIL ON [infor@nationaleducationshow.com](mailto:infor@nationaleducationshow.com) BY 9TH JUNE 2023.



For more information on Llandudno bus services  
<https://www.arrivabus.co.uk/wales/bus-travel-in-llandudno>

Train times and fares can be obtained from:

- National Rail: [www.nationalrail.co.uk](http://www.nationalrail.co.uk) / 03457 48 49 50
- Trainline: [www.thetrainline.com](http://www.thetrainline.com)



You will need to be responsible for looking at the parking terms signs from Conwy Council which have been displayed around the place.

\*The National Education Show does not take any responsibility for this.

Further information for parking in Llandudno can be found on: <https://bit.ly/36CQ8n7>

# ENTRANCE

## Arriving at the Show via rear car park / entrance:

When you walk into Venue Cymru from the car park you will need to walk under the stairs and straight out through the revolving doors.

Signs will guide you to the right along the front of Venue Cymru for the main door which is located at the front of the building. Flags and signs will greet you.

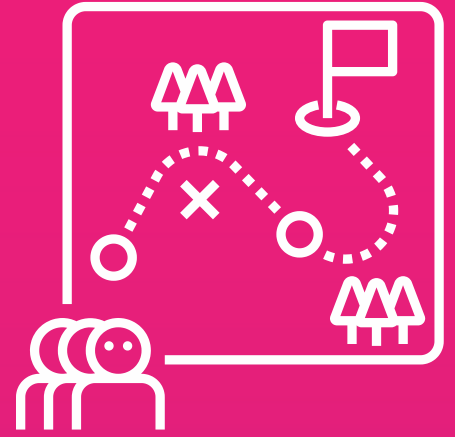
## Attending the Show through the front door of the hall (Door from the Promenade):

The Show will be on the left side of Venue Cymru. Flags and signs will greet you.





# SHOW DAY



## Times:

Hall opens for registration from 8am.

The Rydal Penrhos School choir will be singing in the Mezzanine from 8:15am.

Seminars will start promptly at 9am.

IT IS RECOMMENDED THAT YOU ARRIVE AT VENUE CYMRU EARLY AS WE ANTICIPATE THERE WILL BE A LARGE QUEUE DURING THE REGISTRATION PERIOD.

You will need to bring your ticket with a QR code to register. You will then receive a badge to wear around your neck with your name, job title and school name on it.



On the back of your badge there will be a table displaying the seminars you have registered. You will need to show this to the staff on the doors to attend the seminars.



# THE SHOW



In the 'Arena' there will be over 110 exhibitors displaying their products.

The seminar rooms will be on the first and second floors. There will be staff and signs around the place to make the day easy for you.

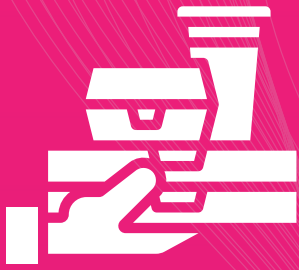


There will be a one way system to go up the stairs. There will be a number of staff and signs around the hall to guide you.



There are ramps and lifts for all rooms if required.  
All rooms will be accessible.





# FOOD & DRINKS



There will be two cafe areas around the Venue during the Show. They will be selling hot and cold drinks, sandwiches and snacks on the day.

There will be a number of places to refill your drink bottle during the day with water throughout the building for FREE!



## IMPORTANT!



**VENUE CYMRU DOES NOT ALLOW YOU TO BRING YOUR OWN FOOD TO EAT IN THE BUILDING!**

# OTHER NOTES



You will be greeted by signs and staff across the Venue.

You will need to have your QR code ready on entry in order to register.



The seminar room numbers will be printed on the back of your lanyard badge.

Top tip....if i starts with;  
**G**\_ it's on the Ground Floor  
**1**\_ it's on 1st floor  
**2**\_ it's on the 2nd floor

TOP  
TIPS



A cloak room will be available to store coats / luggage at a cost of £1 per item.

\*The National Education Show is not responsible for the safety of the item







The National  
**EDUCATION**  
Show

Incorporating the ALN / SEND Show

**16** | **Venue**  
**MEH / JUNE** | **Cymru**  
**2023** | **Llandudno**

**WE CAN'T WAIT TO SEE  
YOU AT THE SHOW!**

Follow us on  
Social Media!



**#NESLlandudno2023**